

## Making the connection

The Pico requires a host PC to control it. Your PC should meet the requirement detailed earlier. Installation is simple, and only a single USB 2 connection need be made between your PC and the Pico.

- Make sure the Pico power switch is set to the off position (0=Off, 1=ON).
- Connect one end of the USB Cable to the USB port on the back of the unit. Connect the other to the USB 2.0 port on the back of your PC.
- Connect Power cable to the power supply. Then connect the power cord from the power supply to the wall outlet.



## CAUTION

Always use properly grounded receptacles, or severe damage to your system may result. The use of a surge protector or Uninterruptible Power Supply (UPS) is highly recommended.

## Starting Up / Driver Install

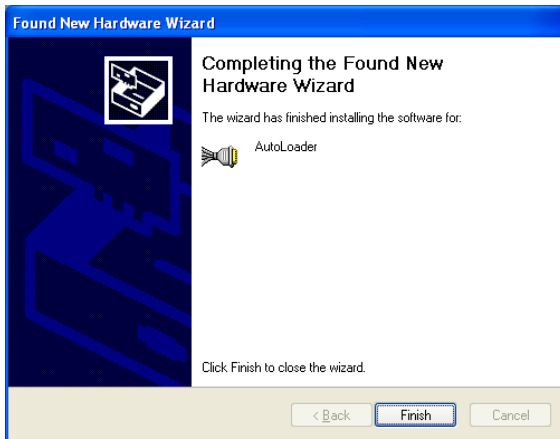


(Fig. 1)

- Insert the installation disc into your computer disc drive.



- Once you have connected the USB 2.0 cable and the power, turn the unit on by pressing rocker the to "1" or "ON". Your PC should now prompt that it has "found new hardware": *Click* "install software automatically" button (See Fig. 1).
- The driver will be installed. If the wizard does not find it



(Fig. 2)

automatically, you will be asked to point to the install file on the Pico Installation CD. Select the file “x:\Autoloader USB driver *AutoLoader.inf*” where “x” is the drive letter of the disc drive in which you have put the Install CD.

- After the driver installation is complete, you will be prompted to finish the installation. (See Fig. 1)
- Click on FINISH