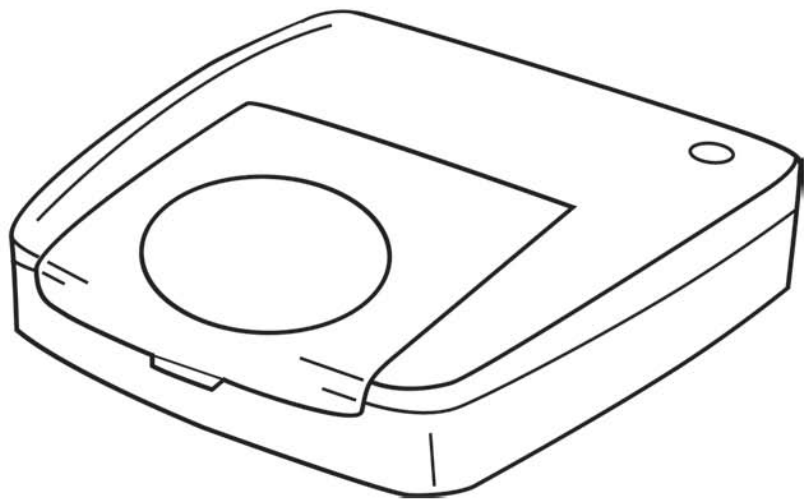


# USER'S GUIDE

# U-Print CD/DVD

User Manual



## WELCOME MESSAGE

Thank you for choosing the U-Print CDP78 CD/DVD Printer. The U-Print is compact and extremely easy to use, giving you the ability to customize your CDs and DVDs by directly printing onto the surface of the disc. The U-Print prints text and images that are smudge resistant and waterproof, giving your projects a professional look and feel. With its exceptional quality and simple design program, the U-Print lets you print with ease and confidence.

Please use the CD/DVD Printer on BLANK CDs or DVDs, as the printing process could damage any data stored on a CD/DVD. Please ensure the printing surface is SMOOTH AND CLEAN. U-Print assumes no liability for any loss or corruption of data stored as a result of using this product.

Be sure to read the SAFETY INSTRUCTIONS as stated in this user's manual as handling it improperly might cause damage to the printer or cause physical harm to the users.

## NOTICE

The information contained in this manual is subject to change without notice.

U-Print shall not be liable for errors contained in this manual or for any loss or damage in connection with the furnishing, performance, or use of this manual and product.

No person shall duplicate, photocopy, or reproduce this manual and application software without the prior written consent of U-Print.

Printed in 2006. All rights reserved.

## TRADEMARKS

Microsoft and Windows are registered trademarks of Microsoft Corporation.

## TABLE OF CONTENTS

WELCOME MESSAGE . . . . .	2
NOTICE . . . . .	2
TRADEMARKS . . . . .	2
INTRODUCING YOUR CD/DVD PRINTER . . . . .	4~8
What's in your printer box	
Product Specifications	
Safety Instructions	
General Features of the CD/DVD Printer	
Printing Functions	
SETTING UP THE CD/DVD PRINTER . . . . .	8~21
Getting Started : Minimum System Requirement	
Installing Application Software	
Installing USB Driver	
Uninstalling Application Software	
Making Connections	
Loading the Ribbon Cartridge	
Replacing the Ribbon Cartridge	
USING THE PRINTER . . . . .	21~24
Loading a Printable Disc	
Removing a Printed Disc	
Creating A Label	
Importing Images	
Creating Curvy Text	

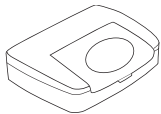
MAINTAINING THE PRINTER . . . . .	24~26
Preventative Maintenance	
Trouble Shooting	
Error Messages	

## INTRODUCING YOUR CD/DVD PRINTER

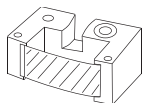
### What's in your printer box

Please check and make sure that you have all the items listed below when you unpack your printer box:

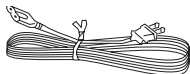
CD/DVD Printer



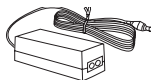
Ribbon Cartridge



Power Cord



AC Adapter



USB Cable



Driver CD-ROM



Blank CD-R for  
Test Printing



If any of the above items are damaged or missing, please contact your retailer immediately.

## PRODUCT SPECIFICATIONS

### PRINTER

**Print Resolution:** 200dpi

**4x90 degree rotation function supports 4 print areas:**

Top & Bottom Section - 2 x 0.94" X 2.36" (24mm x 60mm)

Left & Right Section - 2 x 0.94" X 1.57" (24mm x 40mm)

**Input Power Requirements:** 100 - 240 V

**Output Power Requirements:** 24V DC

**Power Consumption:** max 14.4W

**Dimensions of Printer (WxDxH):** 9.25" X 7.48" X 2.76"  
(235mmx190mmx70mm)

**Weight of Printer:** 2.2lbs (1 Kg)

**Operating Temperature:** 50° to 95° F (10° to 35° C)

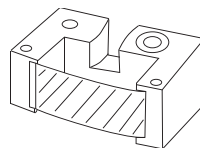
**Storage Temperature:** 68° to 140° F (20° to 60° C)

### RIBBON CARTRIDGES

*The CD/DVD Printer includes one Ribbon Cartridge for monochrome printing.*

**Ribbon Cartridge:** 27.91 ft (8.5m)

- Black
- Red
- Yellow
- Blue



## PRODUCT SPECIFICATIONS

### PRINTER CABLE

Your printer comes with a standard USB cable for connecting the printer to the PC.

### Power Cord & AC Adapter

A Power Cord and AC Adapter is supplied for connection to a power source.

### APPLICATION SOFTWARE

The CD/DVD Printer's application software enables you to design your CD/DVD label, and communicate your print command to the printer. You will find the software on the driver CD-ROM supplied.

## SAFETY INSTRUCTIONS

Please read the safety instructions thoroughly before using the CD/DVD Printer.

### Danger!

Please handle the device according to following safety instructions, as otherwise it may cause fire or electric shock, which could result in the possibility of death or serious personal injury.

- Do not touch the power cord, USB cable or AC adapter when your hands are wet.
- Do not allow any liquids to get into the product.
- Do not use the printer if it starts to emit smoke or strange odor.
- Do not abuse the power cord, AC adapter or USB cable.
- Do not disassemble or modify the printer.
- Do not dispose of the product by incineration as it may explode in fire.
- Keep the plastic bag away from children after unwrapping as it may cause suffocation.

## SAFETY INSTRUCTIONS

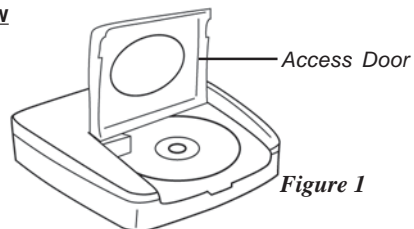
### Caution!

Please handle the device according to the following instructions, as otherwise it may lead to damage of the printer.

- Do not place the product near any heat sources.
- Do not pull the power cord or USB cable during unplugging. Grip and pull out the plug directly.
- Make sure that the power cord is firmly plugged into the power socket when in use.
- Make sure that the USB cable is firmly plugged into both the PC and the printer when in use.
- Do not place any objects on top of the printer.
- Do not place the printer on unstable surfaces.
- Do not touch the printer head or metallic parts nearby after use as they may be hot.
- Do not use electrical items that are not supplied with the printer.

## General Features of the CD/DVD Printer

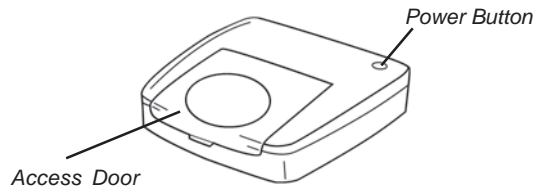
### Top View



*Figure 1*

- Access Door - For loading and removing the disc and ribbon cartridge. (Refer to Figure 1)

### Front View



*Figure 2*

### Power ON/OFF button

- Press power switch to ON to be ready for applications. (Refer to Figure 2)
- Press power switch to OFF to cancel a print job or shut down the printer.

## Rear View

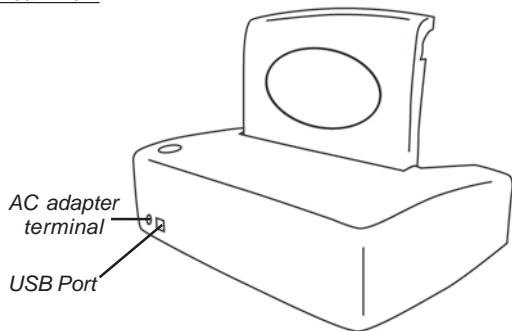


Figure 3

### AC adapter terminal

- Connect the supplied AC adapter to the printer's AC adapter terminal (Refer to Figure 3) for connection to power source.

### Printer's USB port

- Connect the supplied USB cable to the USB port (Refer to Figure 3) for connection to your PC.

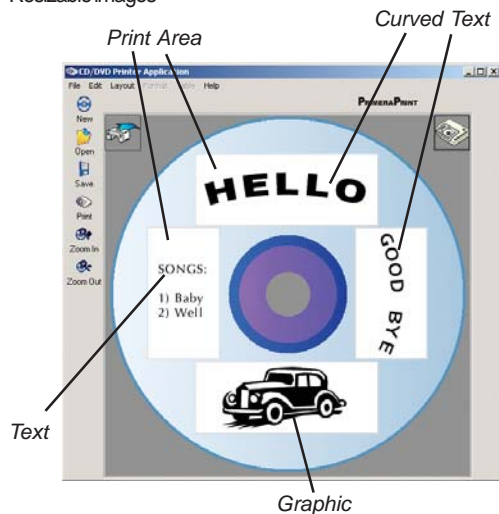
## PRINTING FUNCTIONS

The CD/DVD Printer provides printing in up to 4 sectional areas to create a CD/DVD label.

- Top, right, bottom and left areas each covered at 90° intervals
- Easy-to-use selection of areas to edit.

Supports creation of Text and Graphics Labels

- Original text labels
- Curved text labels
- Resizable images



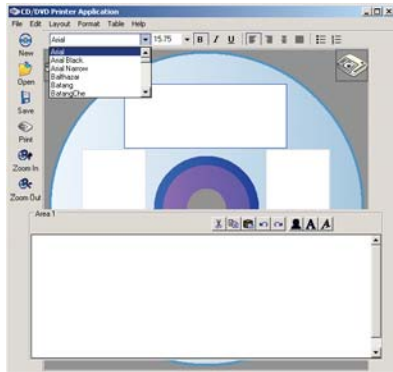
## PRINTING FUNCTIONS

### •Support for Text Label Editing

- Font setting variations
- Selection of font
- Selection of font size
- Paragraph setting
- Bullets and Numbering Setting
- Tables insertion
- Copy, Cut and Paste features for easy import/export of rich text

### •Easy to understand window layout

- Immediate print preview in window layout
- Word processor style layout gives maximum flexibility for text manipulation.



## SETTING UP THE CD/DVD PRINTER

### Getting Started: Minimum System Requirements

The following are the minimum system requirements for using the CD/DVD Printer.

### Operating Systems

- The printer's application software is designed to operate in the following environments:
  - Microsoft Windows 98 Second Edition
  - Microsoft Windows Millennium Edition (Windows ME)
  - Microsoft Windows 2000 (Professional)
  - Microsoft Windows XP (Home or Professional)
  - Minimum color display of 256 colors (high color display is recommended)
  - Minimum resolution of 800 x 600 (higher resolution is recommended)

### Hardware Requirements

- Minimum requirements of Pentium 90MHz, 32MB RAM
- CD-ROM drive
- 1 USB 1.1 port (USB 2.0 compatible)

### Note!

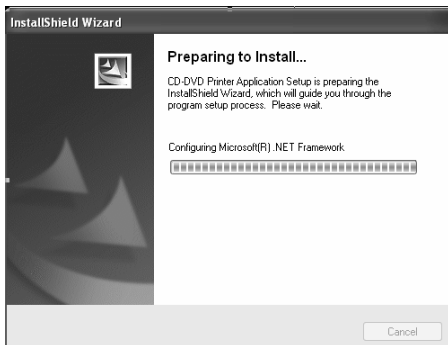
The application software may not be able to function correctly on certain hardware and software configurations. Ensure that all available operating system service packs are installed if you experience difficulties in using the CD/DVD Printer's application software.



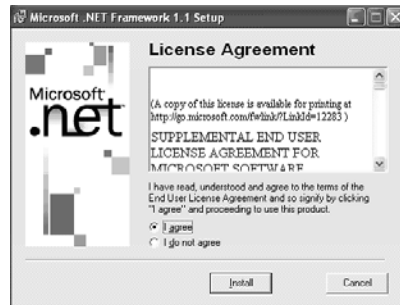
## INSTALLING APPLICATION SOFTWARE

1. Insert the CD-ROM in your PC. (If auto run is disabled on your PC, open Windows Explorer and click the CD icon.)
2. The driver set-up instructions will auto-run on the PC.
3. Follow the instructions on the PC and install the "Microsoft®. NET Framework" (if you do not have the Microsoft. NET Framework installed on your PC)
4. Install the "CD/DVD Application".

Note: Depending on your PC configuration, the display screen may not be the same as shown on the picture below.



1. The InstallShield Wizard will guide you through the program setup.



2. InstallShield® will search for the Microsoft. NET Framework. If it is not found, the Microsoft. NET Framework License Agreement will appear.

Note: Read all the terms and conditions of the License Agreement. Click "I agree" & "Install" to begin the installation



3. This starts installation



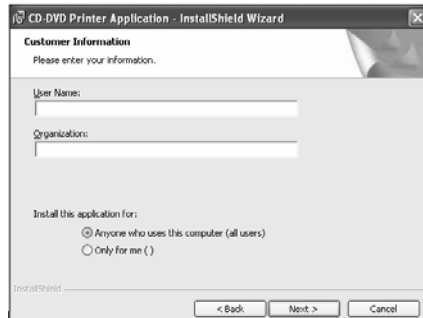
4. A display screen will appear to let you know when the installation is complete.

Click **OK**.

The Microsoft.Net Framework application is now installed.

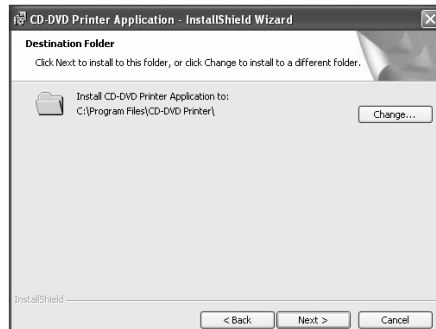


5. \*\*InstallShield will search for the CD-DVD Application on your PC.



6. Key in your **User Name & Organization**

Click **Next**



7. If you want the application to be installed in a folder other than specified, Click **Change** and input the directory.

Click **Next**

8. The InstallShield Wizard will install the CD-DVD Printer Application to the PC.



9. Click **Finish**.  
The application is now installed.



\*\* Note : Due to stability, the install wizard may ask for a system reboot before the CD/DVD Printer Application is installed. If setup doesn't continue after a reboot, just re-run the set-up. The installation will continue from the place it was interrupted.

## INSTALLING THE USB DRIVER

1. After you have finished the Application Installation, connect Printer to PC through the USB cable.
2. The driver set-up instructions will auto-run on the PC. Follow the instructions on the PC and install the "CSQ200 Driver file".

- .....
1. These instructions are for **Microsoft Windows 98 Second Edition and Millennium Edition**.

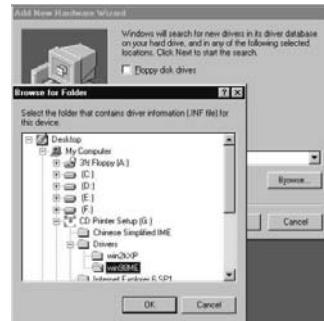
\*\* Note: Depending on your PC configuration, the display screen may not be the same as shown on the picture below.



2. Click **Next**.



3. Highlight the icon "Search for the best driver for your device". Click **Next**.
4. Click **Specify a location**. Click **Browse**. It will locate the driver from CD-ROM\Drivers\win98ME. Click **OK**. Click **Next**.





5. The Windows driver will search for the CSQ200 driver  
Click **Next**.



6. This starts the installation  
Click **Finish**.



1. These instructions are for **Microsoft Windows 2000 (Professional)**

\*\* Note: Depending on your PC configuration, the display screen may not be the same as shown on the picture below.

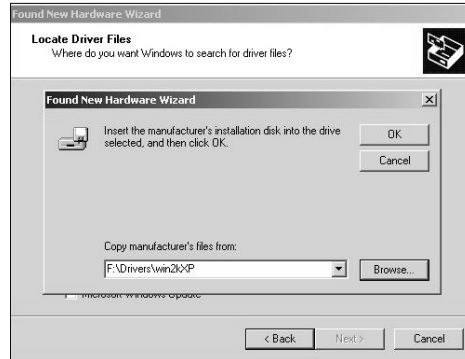
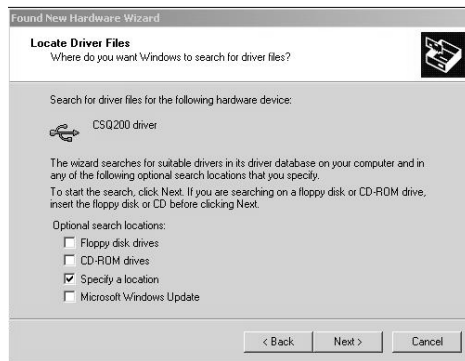


2. Click **Next**.

• This causes the Found New Hardware Wizard to appear.



3. Highlight the icon "Search for a suitable driver for my device". Click **Next**.



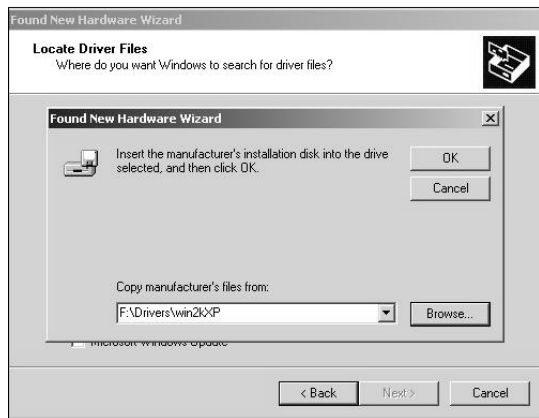
4. Click **Specify a location**.

Click **Next**.

Click **Browse** . It will locate the driver from

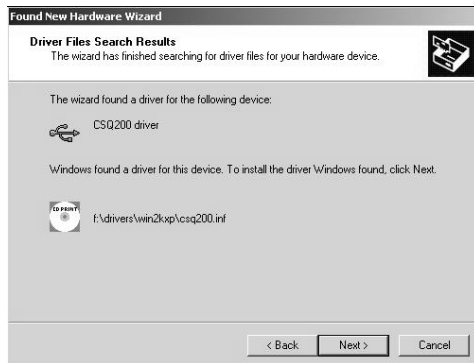
CD-ROM\Drivers\win2kXP

Click **OK**. Click **Next**



5. The Windows driver will search for the CSQ200 driver.

Click **Next**.



6. This starts the installation

Click **Finish**.



1. These instructions are for **Microsoft Windows XP**

\*\* Note: Depending on your PC configuration, the display screen may not be the same as shown on the picture below.



2. Highlight the icon "Install from a list or specific location".  
Click **Next**.



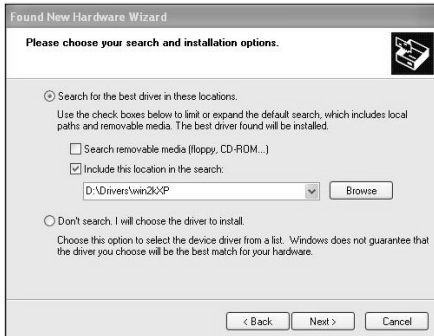
3. Click "**Search for the best in these locations**".  
Click "**Include this location in the search**".  
Click **Browse**

4. It will locate the driver from CD-ROM\Drivers\win2kXP  
Click **OK**  
Click **Next**





5. The Windows driver will search for the CSQ200 driver  
Click **Next**.



6. Click **“Continue Anyway”**  
This starts the installation



7. Click **Finish**.



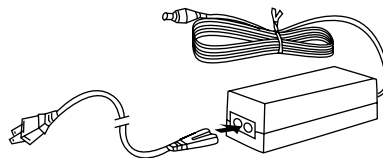
## UNINSTALLING THE APPLICATION SOFTWARE

1. Click the Windows **Start** button, point to **Settings**, and then click **Control Panel**.
2. Once the control panel window appears, double click **Add / Remove Programs**.
3. Once the dialogue box appears, click CD/DVD Printer Application in the list of installed software.
4. Click the Remove button. Once the file delete confirmation dialogue box appears, click Yes to begin the uninstallation process.
5. Once it is completed, click **Close** to exit.

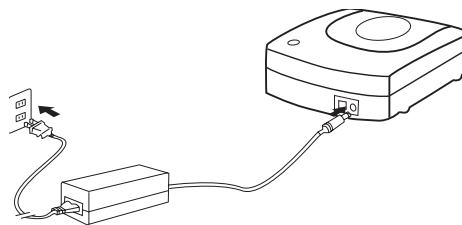
## MAKING CONNECTIONS

The application software for the CD/DVD Printer must be installed on your PC before connecting the power supply.

- 1) Connect the power cord to the AC adapter.

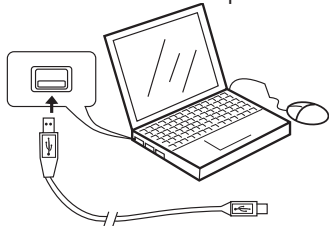


- 2) Connect AC adapter to the printer's AC adapter terminal & plug the power cord into a power socket.

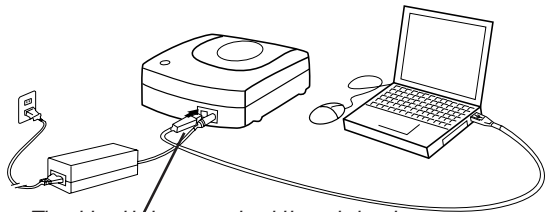


## MAKING CONNECTIONS

3) Connect the USB cable to the USB port of the PC.



4) Connect the USB cable to the USB port of the printer

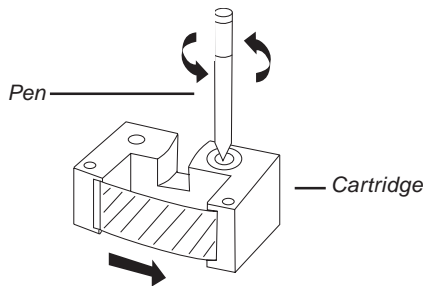


*The side with the arrow should be pointing down.*


- Do not disconnect the AC Adapter, power cord or USB cable during the printing process as it may cause the printer to malfunction.
- Only use the power cord and AC Adapter supplied with the printer.
- Ensure that you use a standard household power socket rated for the voltage specified on the supplied AC adapter.
- Connect the USB cable directly to the USB port of the PC.
- Connecting through a hub or chaining through another USB device may cause the printer to malfunction.

## LOADING THE RIBBON CARTRIDGE

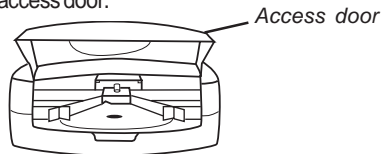
1. Tighten the ribbon in the ribbon cartridge by turning the hub using an object with sharp end. The printer will malfunction if the ribbon is slack.



2. Start the CD/DVD printer application.

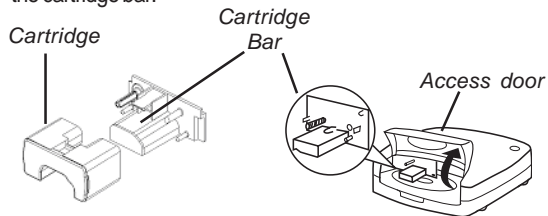
3. Click the **“Change Cartridge”** icon  on the window application to move the cartridge holder to the ‘Change cartridge position’ or ‘cancel’ to exit.

4. Open the printer access door.

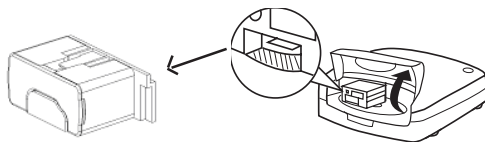


## LOADING THE RIBBON CARTRIDGE

5. Position the ribbon cartridge so that the ribbon passes under the cartridge bar.




6. Press the ribbon cartridge against the carriage until the cartridge is in line with the carriage bar.



7. Click the **OK** button on the cartridge dialogue box and the cartridge will move back to the home position, or "Cancel" to exit.
8. Close the printer access door.

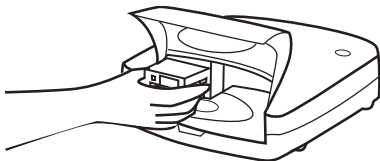


## REPLACING THE RIBBON CARTRIDGE

1. Start the CD/DVD Printer Application
2. Click the "**Change Cartridge**" icon  on the window application to move the cartridge holder to the "change cartridge position" or "cancel" to exit.
3. Open the printer access door.
4. Pull out the ribbon cartridge from its position.  
Take care that the cartridge does not move, grip the ribbon cartridge on both sides with your fingers and pull it out.
5. Replace with another ribbon cartridge by pressing it against the carriage until the cartridge is in line with the carriage bar.

6. Click the OK button on the cartridge dialogue box and the cartridge will move back to the home position, or cancel to exit.

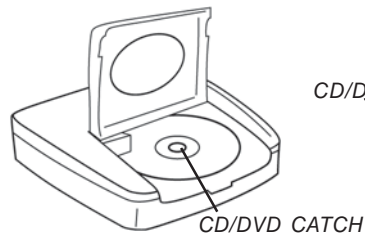
7. Close the printer access door.



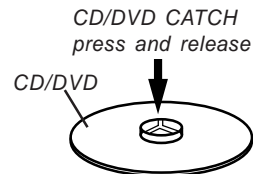
**Caution !**

Do not apply too much force to the ribbon winder shaft as it may lead to damage.

**USING THE PRINTER**



*Figure 4*



*Figure 5*

**Loading a Printable Disc**


1. Open the printer access door
2. Place blank printable disc firmly onto the CD/DVD catch (Refer to Figure 4)
3. Close the printer access door

**Removing a Printed Disc**

1. Open the printer access door
2. Press down the center of the CD/DVD catch to release disc (Refer to Figure 5)
3. Close the printer access door

## CREATING A LABEL

1. Place the disc onto the CD catch with its printing surface facing up. Do not place the printing surface facing downward as it will damage the disc.

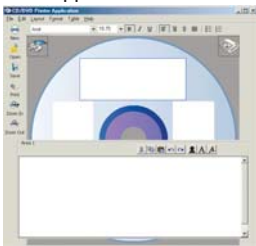
2. On the Windows desktop, double-click the  icon and the main application window will appear.

Alternatively, you can also run the application by clicking the **Start** button followed by **Programs**. Next, click the **CD/DVD Printer application** and select the **CD/DVD Printer** from the list.

3. Click on any label boxes to create text.

4. Click on the “Formatted Text Edit”  icon

5. A window “Area” will appear



6. Configure the layout setting. Make the selection by clicking the respective pattern icon on the top of the editing window.

7. Select a font

- Select the font type, size, style and text alignment in the editing window.
- Edit the content
- Click on other label boxes to continue with their editing or outside these boxes to exit.

8. Print a label

- Click the print  icon.
- The printing display dialog box appears.
- Click **OK**. This will start the printing operation.


9. Save a label by clicking the  icon. The printing job is saved in your Windows My Document folder.

10. To quit the CD/DVD Printer application.


- Go to **File** tab.
- On the drop down menu, click **Exit**.
- A dialog box will appear. Click **Yes** to exit the application.

## IMPORTING IMAGES

You can import images into the label from files or folders.

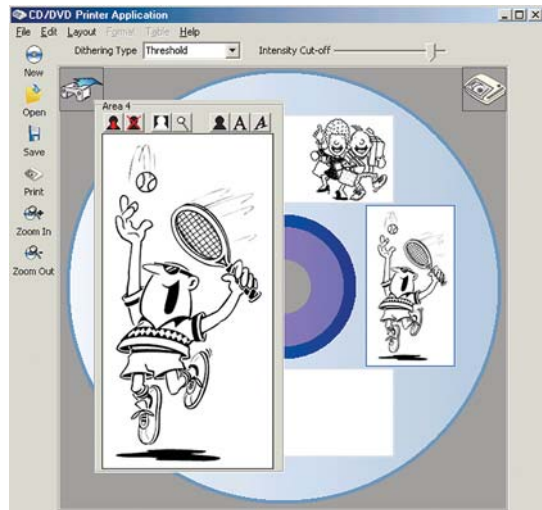
1. Click on any label boxes to import the images.
2. Click on the “Switch to image edit mode”  icon.
3. A window “Area” will appear.




4. Click on the “Insert/Change image”  icon
5. A window “Image Attributes” will appear “Image Position” and “Scaling” can be adjusted under here.

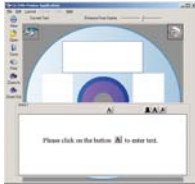



6. Click on the “Load Image”. The file dialog box will appear, select the directory and the file that you want to insert.
7. Click OK.
8. The image will be imported to the label box.



## CREATING CURVY TEXT

1. Click on any label box to import the curvy text
2. Click on the “Curved Text”  icon
3. A window “Area” will appear

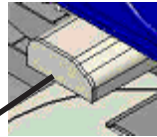


4. Click on the “Enter Text”  icon
5. A window “Edit Text” will appear  
A wide selection of “Font Text” is available.
6. Click “Distance From Centre” to adjust the size of the font.
7. The curvy text will be imported to the label box.

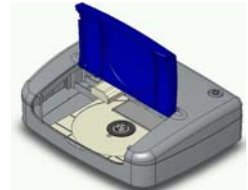


8. Place the cursor outside the box to exit.

## MAINTAINING THE PRINTER



*Print head beneath carriage bar*



*Figure 6*

### **Preventative Maintenance**

- Always maintain the print head in clean condition. For cleaning, use a cotton swab moistened with alcohol or commercially available cassette tape recorder head cleaning kit to clean the print head (Refer to Figure 6)
- Prevent dust from collecting on the exterior surface by cleaning with a cloth moistened with clean water. Do not use alcohol, thinner, or other volatile agents on the exterior surfaces as it can damage the casing.



## CLEANING THE PRINT HEAD

A dirty print head will produce bad print quality. Perform the following steps to clean the print head when it becomes dirty.

**Note:** Use a cotton bud stick or other soft material to clean the print head.

1. Click on file and select “Clean Print Head...” on the drop down menu. (See Figure 7)

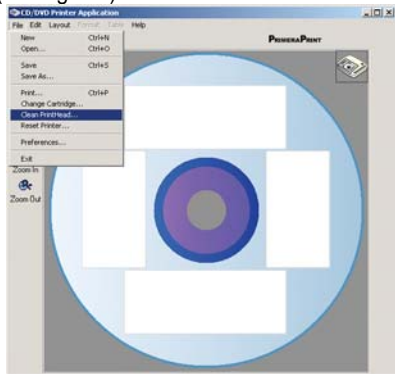
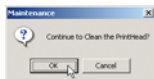


Figure 7

2. Click OK to continue.



3. The Carriage will move to the cleaning position. Unplug the Power Cable and the USB Cable before cleaning the Print Head. Click Ok.



4. Use a cotton bud stick moistened with alcohol to clean the print head. You can also use a commercially available cassette tape recorder head cleaning kit to clean the print head. Insert the tip of the cotton bud stick and slide it lightly back and fro along the area shown in the Figure 8.

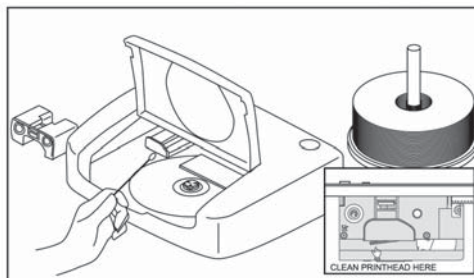


Figure 8

5. Plug the 2 cables back and continue printing.

## TROUBLESHOOTING

Problem	Solution
<b>No response from my printer</b>	<ol style="list-style-type: none"> <li>1) Ensure that all the connectors are connected properly.</li> <li>2) Ensure that the application software is installed:                             <ul style="list-style-type: none"> <li>- Disconnect the USB cable and reinstall the CD/DVD printer application software.</li> <li>- Reconnect the cable.</li> </ul> </li> </ol>
<b>Poor printer quality</b>	<ol style="list-style-type: none"> <li>1) If the print head is dirty, clean the print head as described in the preventive maintenance above.</li> <li>2) If the printing density is improper, adjust the printing density.</li> <li>3) If the disc print surface is not suitable, change the disc media. Thermal printable media is recommended.</li> </ol>

<b>Unable to print</b>	The ribbon cartridge has run out. Replace the cartridge according to loading procedure.
<b>Portions of input data are not printed.</b>	Reduce the number of lines or use a smaller font size.
<b>Ribbon become loose</b>	Remove the cartridge from the printer and roll the ribbon with a sharp ended object at the hub of cartridge until it is tight.
<b>Printer or PC application hangs</b>	Unplug both USB and Power adapter cable from the printer. Reconnect USB and Power adapter cable to printer.

## ERROR MESSAGES

You may sometimes receive the following common error messages while using the printer. Please follow the following instructions if you encounter them.

Error Message	Action
<b>No ribbon cartridge in the printer.</b>	Load a ribbon cartridge in the printer and try again. Follow the procedure under the section on “loading the ribbon cartridge”
<b>The ribbon is finished.</b>	Unload the ribbon cartridge and load a new one. Follow the procedure under the section on “Replacing the ribbon cartridge.”
<b>Not enough ribbon for the next printing.</b>	Replace the ribbon cartridge before proceeding on with the next print job.