

How to reset Pico's Arm if it gets stuck.

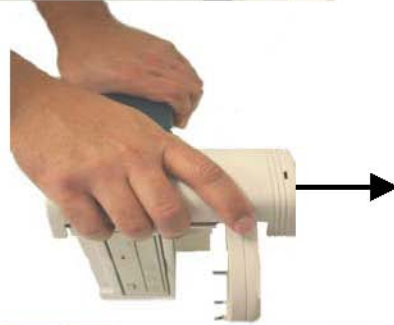
1. Turn off the power Remove the power cord and USB Cord from behind Pico.
2. Carefully, place Pico on its side (label side).



3. On the bottom on the arm assembly there are two phillips screws on the silver bracket. Remove the two phillips screws.

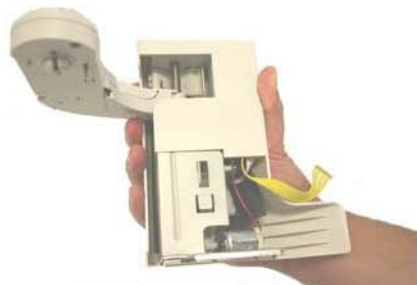


4. The arm assembly has a hook and a slip notch that attaches to the drive base. You will need to push gently in an upwards motion to detach the arm assembly.
5. Upon doing this, you will see a yellow ribbon cable. The cable is attached to a pin connection on the side of the drive base. It might be easier to disconnect it temporarily while performing the next few steps.
6. Taking the arm assembly in your hand, look for the small silver motor that has a white plastic gear.



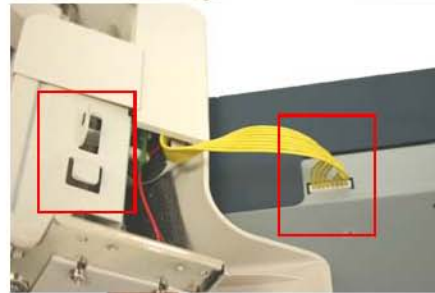
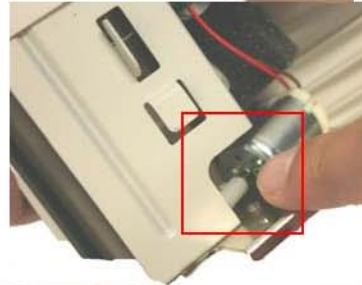
Using your finger, rotate this gear so that the arm moves either in an upward or downward direction.

If you are holding the arm assembly as pictured, rotating the gear counter clockwise (pushing away from you) will cause Pico's arm to move down, rotating the gear clockwise (towards you) will cause Pico's arm to move up. It is suggested to rotate this gear so the arm moves about an inch from where it was.



7. Once the arm is in a satisfactory position, you can now (if disconnected) reconnect the yellow cable.

8. As you reattach the arm assembly, be sure to tuck the yellow cable back in the cove of the arm assembly. The arm assembly as stated before is hooked to the drive base, after you have the arm assembly flush on the drive base, gently push downward to lock the hook & slip notch in place.



9. Be sure to reinsert the two phillips screws on the silver bracket (below the arm assembly). Now the arm assembly is firmly connected.

10. Reconnect the power cord and the USB cable.

11. Turn on the Pico Unit and see if the arm resets itself by hovering over the output tray.

Pico's arm light should now be a solid green light.

