



**Hardware Installation and Setup Guide
For
PowerPro Thermal Printer**

**This Printer Guide is to be used in conjunction
with the
Elite Hardware and Setup Guide.**

Service and Contact Information

Free lifetime technical support.

Disc Makers' Technical Support Department is here to help you every step of the way with your duplication system. Our goal is to minimize your downtime and maximize the return on your investment. We offer FREE technical support to you for as long as you own your duplicator. If you run into any problems or have any questions, call us at 1-888-800-4041.

Our tech support hours are 9am to 5pm EST Monday through Friday.

Toll Free Service Number 1-888-800-4041

Service Email techsupport@discmakers.com

Elite Website: www.discmakers.com

CAUTION!

Installation and set up of the thermal printer requires qualified technical staff. Thermal printing is based on a fixed thermal head that is rigidly positioned above the CDR-DVDR. If miss-alignment or mistakes are allowed when engaging the print head, damage can occur to the thermal head. This damage could cause a drop in print quality and/or destruction of the head. Head replacement is expensive and the standard warranty will not apply to mistakes by the operator.

CAUTION!

© 2001 2002 2003 Amtren Corporation

Flexwriter is a trademark of Amtren Corporation
Elite is a Trademark of Disc Makers
Microsoft, Windows and XP are registered Trademarks of Microsoft Corp.
Intel and Celeron are registered Trademarks of Intel Corporation
Plextor is a registered Trademarks of Plextor Corporation
Sanyo is a register trademark of Sanyo Corporation
Padus and Diskjuggler are registered trademarks of Padus Inc
Primera is a registered trademark of Primera Technology, Inc

All other trademarks and registered trademarks are the property of their respective owners.

Thermal Printer Option Installation of the PowerPro CD Printer

Review the printer documentation included in the carton with the PowerPro printer. Install the thermal ribbon and ready the printer for printing. Perform and complete any printer checks before installing the printer onto the Elite unit.

Note to obtain additional supplies for the printer call toll free 1-888-800-4041 or online at Discmarket.com

The Elite is generally supplied with an Inkjet Printer Tray and this tray must be removed. Please store this tray if you plan to ever use the Elite for Inkjet printing.

To install the printer onto the Elite unit following these steps:

Install the thermal ribbon and prepare the PowerPro for operation

Install the PowerPro Software located on the CD supplied with the printer documentation.

Remove the Inkjet tray that was shipped on the Elite.

Locate and install the PowerPro Thermal Printer tray onto the Elite Unit

Secure the fasteners snug, but do not tighten.

Place the printer into the print holding tray located at the top of the drive stack. Holding the printer with hands on the left and right side, insert the front of the printer at an angle first, and then let the back section "drop into" place. The printer should be securely inserted into the print holder tray and should be completely level.

Connect the parallel printer cable provided with the Elite into the rear of the printer and connect into the Elite connector on the rear of the Elite (or to your PC if the you are using an external PC).

Connect the CD Printer mini din control cable to the rear of the Elite and connect the DB9M connector into mating connector in the rear of the printer.

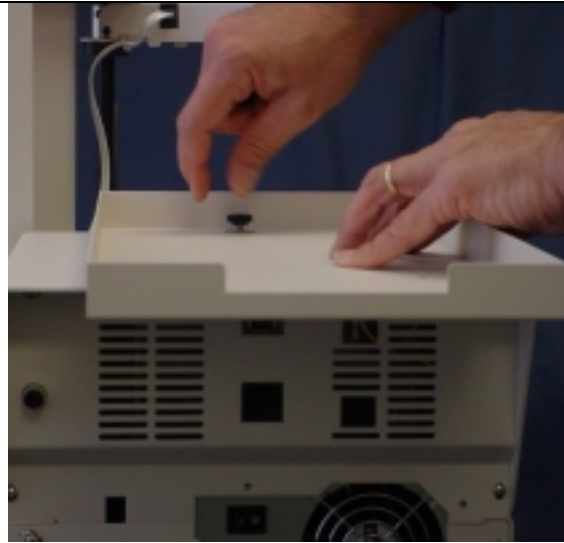
Connect the AC Power cord that was provided with the CD Printer next to the rear of the printer and connect into a standard 115VAC outlet.

When you connect the printer and power is applied, the printer will perform a basic internal test and then wait for additional commands from the operator or the software. Once the printer has completed it self-tests, you will need to align the printer. First open the printer tray and open one of the drives below the printer. Look down through the printer tray opening adjust the printer position so that the center of the tray aligns with the drive tray center. Next close the printer and drive trays.



Step 1

If your unit was shipped with the Inkjet Tray attached, remove the InkJet Printer tray and keep the mounting hardware. If your unit was shipped without the Inkjet Printer Tray, Proceed to Step 3A



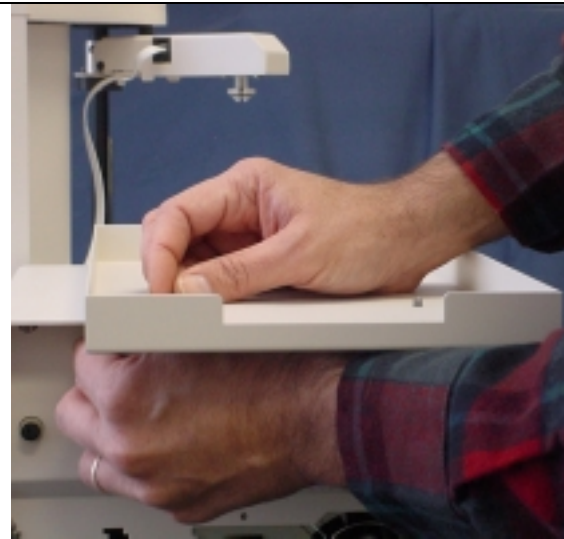
Step 3A

Locate the Thermal Tray and place it onto the Elite unit. Using the hardware removed from the inkjet tray, install the FRONT thumb screws to secure the Thermal Tray. (Note: Snug the screws, but allow the tray to move for final adjustment)



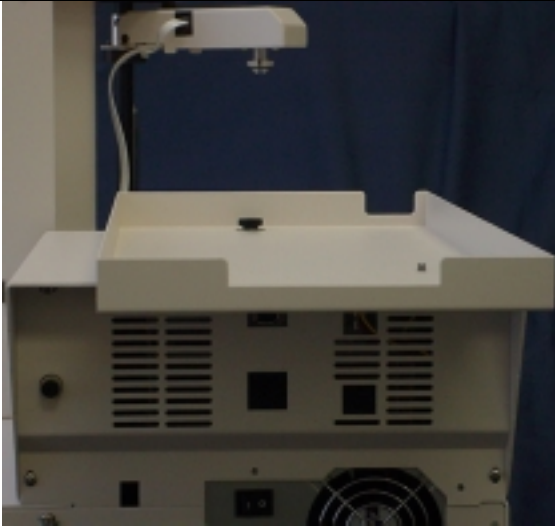
Step 2

View of unit without InkJet Printer Tray



Step 3B

Using the hardware removed from the inkjet tray, install the REAR thumb screws to secure the Thermal Tray. (Note: Snug the screws, but allow the tray to move for final adjustment)



Step 4
With the Thermal Tray mounted, prepare the PowerPro Pinter for placement onto the tray

****The Printer is heavy, be careful when attempting to place the printer onto the Elite unit****

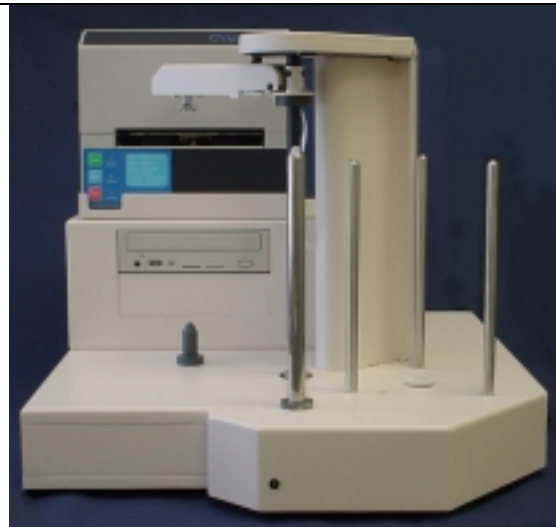


Step 6
Connect the AC Power cord, the Printer Control Cable and the Parallel cables as required.



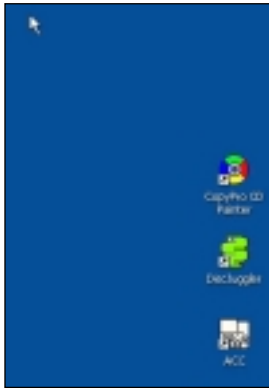
Step 5
Place the PowerPro into the Tray with the Front of the Printer being inserted first, then allow the back end to drop into the tray.

****The Printer is heavy, be careful when attempting to place the printer onto the Elite unit****



Step 7
Apply power to the printer and allow it to become ready for service. Open the ACC on the Elite host system and follow alignment steps.

With the printer set up, follow these steps to allow final set-up:

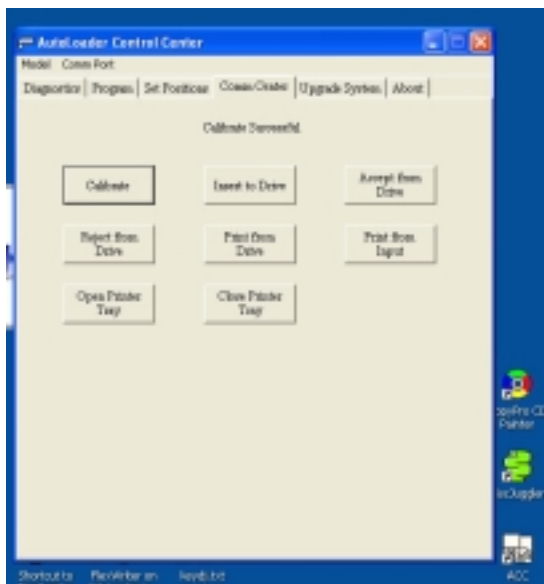


Open the ACC (Autoloader Control Console) this will allow the printer to be aligned.

When the ACC is opened, click on Run Diagnostics and allow the loader and printer to cycle. Once complete all the areas should be green.

If any of the circles are RED, STOP DO NOT CONTINUE until steps are taken to correct the issue.

If all are GREEN then click on the Comm Center folder.



When the Comm Center folder is displayed, click on Calibrate. The unit will run through a calibration and stop.

Place CDRs or DVDRs into the input spindle and click on Print from input. Watch very carefully and when the CD pick up device places the CD onto the printer, observe the alignment. Move the printer tray until the CDR is placed onto the center of the print tray. Run more test input cycles and observe how the unit operates.

Once the printer and tray is aligned:

- 1) Tighten rear thumb screws
- 2) Carefully remove printer & tighten front thumb screw
- 3) Replace Printer
- 4) Now you are ready to print

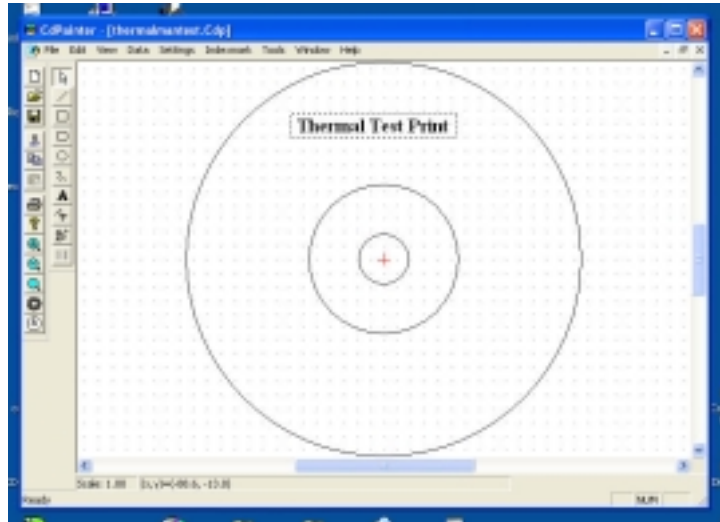
(If the alignment is not correct STOP and correct or you may damaged media and possibly the PRINT HEAD)

Now test the printer.

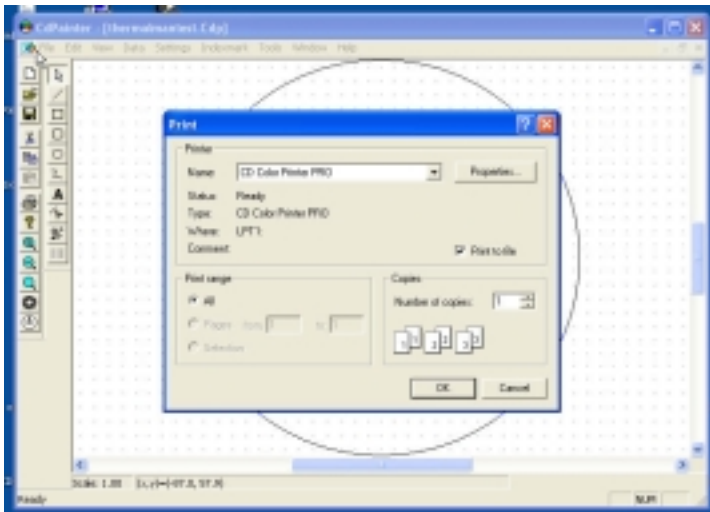
With the printer aligned to load the CD-DVD correctly, open the PowerPro label software. Make a test image in the software and print several discs manually by loading the printer by hand.

STOP : If the printer does not print your label manually, **STOP** and take steps to print your label. **DO NOT PROCEED IF YOU CANNOT PRINT MANUALLY.**

Once the test image is established and approved we can move to using the autoloader and processing discs automatically.

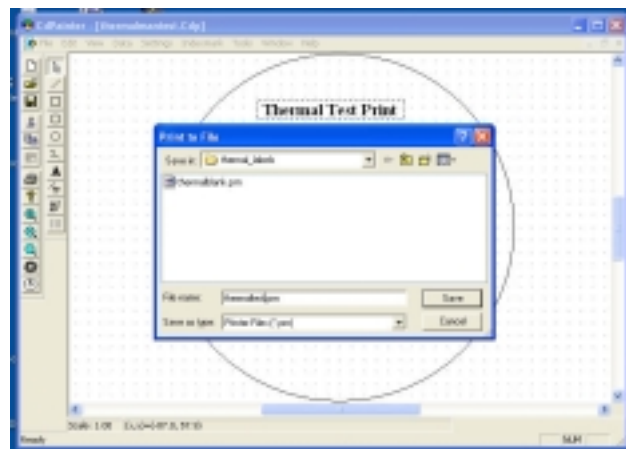


STOP : Save your file!



To use the printer file with the DiscJuggler software, you will need to *Print to File(.prn)*. Be sure to watch where you save the print file, so that it can be used correctly.

With Windows XP you will need to name the print file and include the .prn as an extension. Place the entire name in the box, for example **thermal.prn**



Now you are ready to move to DiscJuggler and automatically print discs.
Proceed to Page 10 in the Elite Hardware Installation and Setup Guide