



Instructions to get your Elite 2 duplicator set up, powered, and running

Setting up the equipment

The Elite 2 duplicator has been engineered for easy setup and simple use. You can connect it to any recent Windows-based computer that meets the minimum hardware and software requirements (refer to *Meeting the setup requirements* for details).

Follow the instructions in this guide to start using the equipment quickly. The procedures take you through the steps necessary to connect the duplicator to a computer, connect all components, prepare the printer for use, install the required drivers, install and run the FlexWare duplication software for the first time, and perform a simple disc copy and print operation. Once you have completed the steps in this guide, refer to the *Elite Series User Guide* for more information about using your duplicator.



Choosing a setup location

Set up the duplicator on a sturdy, vibration-free work surface away from sources of airborne contaminants and strong electromagnetic fields. The duplicator should

also be set up away from direct sunlight or very strong artificial light; the optical sensors inside the unit may not operate properly if ambient light levels are too high.

For consistent duplication results, whether attended or unattended, we strongly recommend the use of an Uninterruptible Power Supply (UPS) for isolating the duplication system and printer from the effects of AC power fluctuations or brief power outages. An AC power strip with line filtering and surge protection offers some protection if you do not use a UPS device.

Meeting the setup requirements

The Elite 2 duplicator performs most effectively when used in combination with a dedicated, reasonably modern computer system that meets or exceeds the following requirements:

<i>Computer hardware requirements</i>	<i>Operating system requirements</i>
<i>Minimum:</i> System powered by an Intel® Celeron® 2.0GHz or faster processor	Microsoft Windows XP Professional Microsoft Windows XP Home
<i>Minimum:</i> 7200 rpm 40-Gigabyte hard drive with 70-percent free space	
512MB RAM	
Two available USB 2.0 ports [USB 1.0 ports lack sufficient transfer speeds to support disc duplication operations. If you have USB 1.0 ports on your system, upgrade with a USB 2.0 board.]	

Note: We recommend that you defragment the hard disk drive on the selected host system using the standard Windows defragmentation utility before beginning the setup procedure. To ensure top duplication performance, defragment the system hard disk drive on a weekly basis.

Connecting the duplicator to a computer

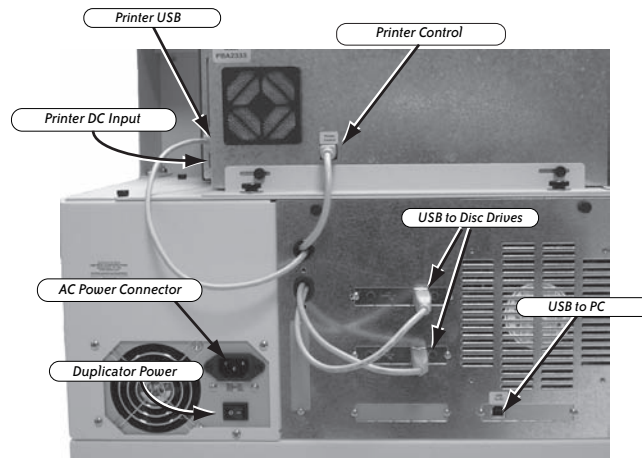
- 1** Power down the selected host computer.
- 2** Plug one end of a USB cable into the connector labeled *USB to PC* on the back of the duplicator cabinet. Plug the other end of the cable into a USB 2.0 port on the selected host computer system.

Note: USB 1.0 interfaces cannot handle the data transfer rates required for disc duplication tasks. If your system has USB 1.0 ports, you must upgrade to USB 2.0 to use the duplicator. Add-on boards can be purchased and installed to perform this upgrade.

Connecting the power and printer cables

*Note: After connecting the power cables, as described in the following steps, do not power up the system until you have completed the procedure in the next section, titled *Preparing the printer*.*

- 1 At the back of the duplicator cabinet, connect the AC power cord to the unit. Connect the other end to a UPS device, AC power strip, or AC wall outlet.
- 2 Connect the AC power adapter for the printer to the AC power cord. Plug one end into the printer DC input connector and the other end into a UPS device, AC power strip, or AC wall outlet.



- 3 Ensure that the cable that emerges from the middle of the duplicator cabinet and connects to the Printer Control port is securely attached.
- 4 Connect the USB cable from the USB to Printer connector on the back of the cabinet to the USB connector on the back of the printer enclosure (directly above the printer power input).

Preparing the printer

The self-contained printer included with the Elite 2 duplicator features its own power supply and individual controls. Before using the printer or the duplicator, install the two print cartridges provided as described in the following sections.

Powering on the printer

- 1** Check to ensure that the AC adapter at the back of the printer is connected to the printer power input and a power source.
- 2** Press the upper button with the power symbol on the printer cabinet. The green and amber lights cycle for a moment as the printer starts.

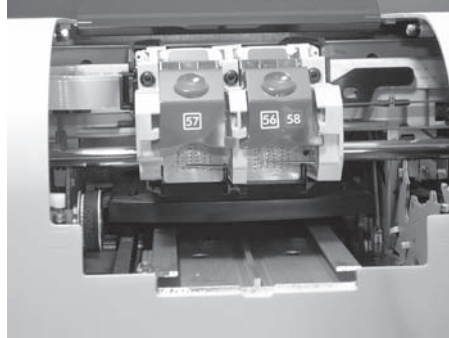


- 3** Once the green light beside the printer power button is illuminated, follow the procedure in the next section to install the print cartridges.

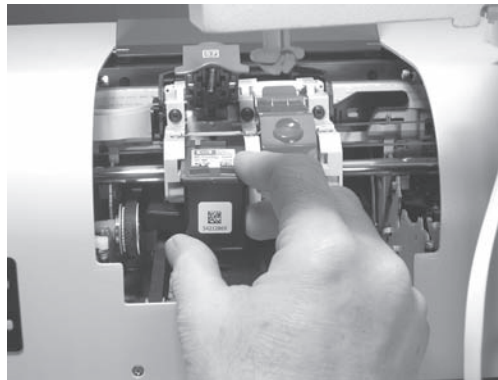
Installing printer cartridges

The Elite 2 duplicator includes two print cartridges: one black and one color. Do not unwrap the cartridges until you are ready to load them into the printer. When you do unwrap them, handle them only by the edges and do not touch the ink nozzles or metal contacts. The cartridges are color coded for easy loading, as described in the following installation procedure.

- 1** Open the cover of the printer cabinet. The print cartridge assembly positions itself in the center of rail for easy access.



- 2** Open the latch on the left cartridge holder, labeled 57, by pushing upward on it.
- 3** Unwrap the color cartridge, remove the tape from the ink nozzles, and insert the cartridge into the holder. The cartridge should slide easily into place—you do not need to force it.



- 4** Lower the latch and snap it into place to secure the cartridge.
- 5** Repeat this same procedure for the black cartridge that inserts into the right cartridge holder.
- 6** Close the printer cover when both cartridges are securely installed in their holders. The printer goes through a brief sequence to prepare the cartridges for printing.

*Note: You can test the operation of the printer during the procedure described in the section titled *Operating the duplicator*.*

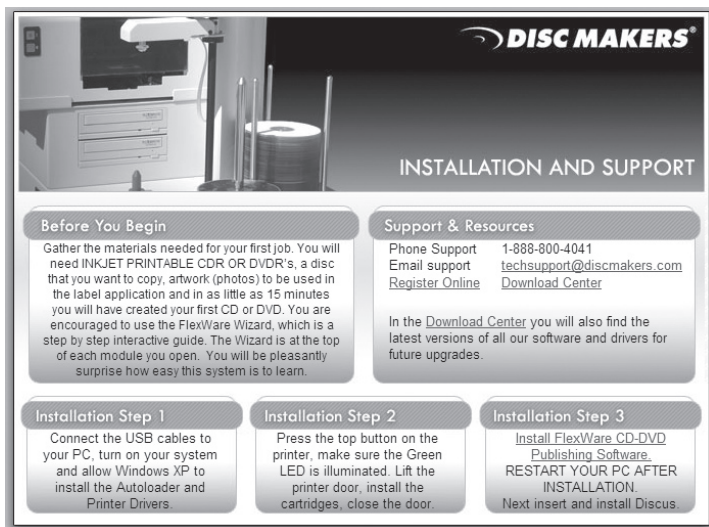
Installing the drivers and software

Two software installation discs are included with the Elite 2 duplicator:

- FlexWare Installation & Support CD-ROM (with the FlexWare application and all the drivers required for duplicator operation)
- Discus installation CD-ROM (with the disc label printing application)

Complete the installation procedures as described in the following steps.

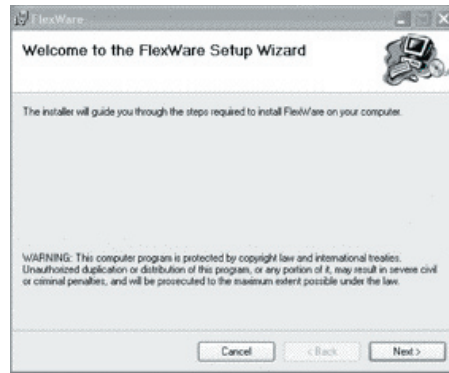
- 1 Power on the host computer and insert the FlexWare Installation & Support disc into the computer disc drive. If Autoplay is not active, go to the CD-ROM and click the icon labeled *click_here*. The Installation & Support screen appears.



- 2 With all cables securely connected to the duplicator, press the power switch on the back of the duplicator cabinet to the "1" position.
- 3 Press the power switch on the left side of the cabinet once. The system fan starts spinning and the green and amber activity lights illuminate on the face of the cabinet.
- 4 Select the disc printer driver installation from the options and follow the instructions to complete the operation. Note that the standard Microsoft Windows driver for this Hewlett-Packard printer can be used with other programs, but it does not include all the functionality required by FlexWare.
- 5 Follow the onscreen instructions to choose: USB drivers for the autoloader from the installation disc, high-speed serial converter, autoloader's disc recorders, and USB hub. Let each of these installations proceed from the installation disc until all driver files have been installed.

Note: If Windows displays a warning that the drivers have not passed XP certification, click OK to proceed.

- 6 Return to the installation disc and select FlexWare Setup. The startup screen for the FlexWare installation appears, as shown in the figure.



- 7 Follow the steps in the FlexWare Setup Wizard to complete the installation of FlexWare on the host computer.
- 8 Remove the Installation and Support disc from the computer disc drive and restart the computer.
- 9 After the computer restarts, make a note of the serial number on the Discus CD-ROM sleeve (this key is needed to finalize the installation). Insert the Discus CD-ROM into the computer disc drive and select the *Install to hard disk* option from the Launcher screen that appears.
- 10 At the conclusion of the installation, Discus places an icon on the Windows desktop. Click this icon and Discus displays an entry dialog box for the serial number that you noted earlier.
- 11 Enter the serial number and click OK to confirm your entry. Discus starts up and displays its initial screen. You can run Discus either independently or access it from within FlexWare (FlexWare automatically locates Discus following installation and can access it directly from within the application).

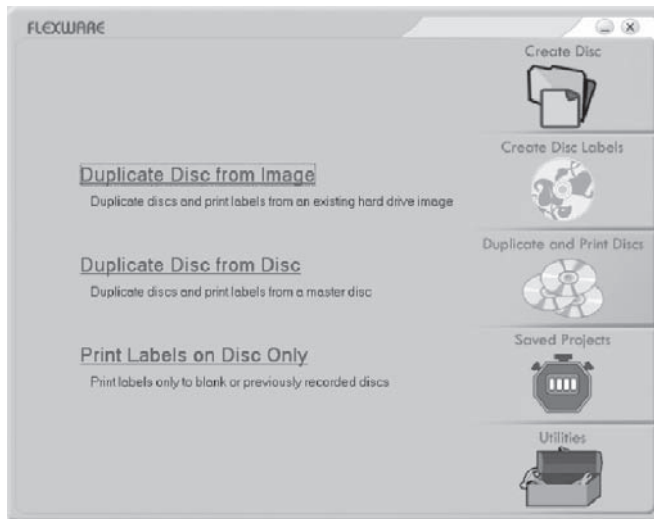
Operating the duplicator

To help you get started duplicating discs, this section guides you through the initial use of FlexWare, setting up a copy operation with a built-in wizard, including the printing of a disc label. First, place two blank discs on the input spindle. Then, select a non-copy protected disc to use as a master in this procedure and place it on top of the blank discs on the input spindle. We recommend using a master disc with a minimal number of small files so that the test will run more quickly.

Before starting, be sure that you have completed the earlier procedures in this guide for connecting the cables, setting up the printer, installing the software, and powering up the duplicator.

Starting FlexWare

- 1 Following the FlexWare software installation, the Windows startup screen displays a small FlexWare shortcut icon in the upper left below the My Computer icon. Double click the FlexWare icon to start the program. The main menu window appears.



- 2 You can view the various program options by positioning the cursor over each item. FlexWare then displays the available functions for each selection.
- 3 Position the cursor over Duplicate and Print Discs. The program displays the available selections to the left.
- 4 Click Duplicate Disc from Disc. FlexWare displays the application window that supports this task.
- 5 Click the Wizard link just below the menu bar to initiate the step-by-step wizard for duplicating disc from disc, as described in the next section.

Running the wizard

The self-guided wizard helps you through each of the steps involved in this duplication task. You can, of course, use settings of your own as you work through the screens of the wizard, but to simplify the operation, we suggest using these values:

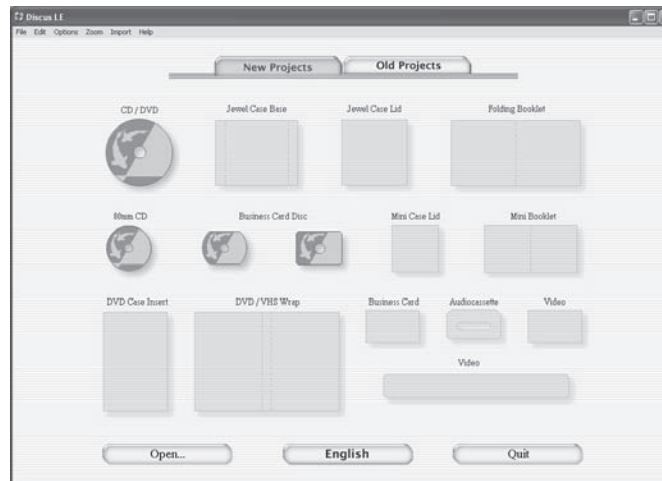
- Source: default drive
- Read speed: Auto
- Write speed: Auto
- Number of discs: 2
- Create new print file: selected

When you click *Next* from the *Create new print file* option, FlexWare launches Discus, described in the next section, to produce an image for printing on the blank disc.

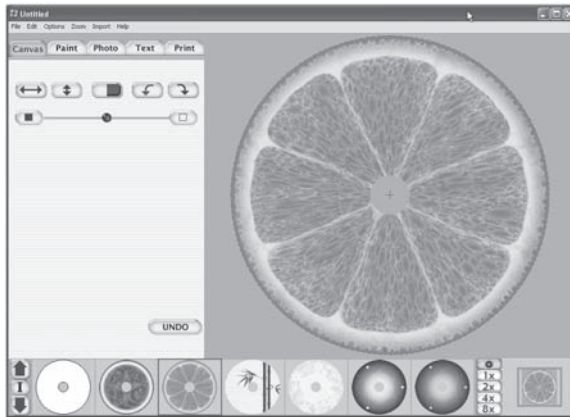
Setting up labels

The Discus program included with the Elite 2 duplicator provides an intuitive way to create visually appealing labels for printable surface discs. Discus lets you either print labels individually, directly to the disc printer, or create disc images that can be used in automated duplication operations. The following sequence demonstrates how to create a label image that can then be used in the Disc to Disc Duplication task.

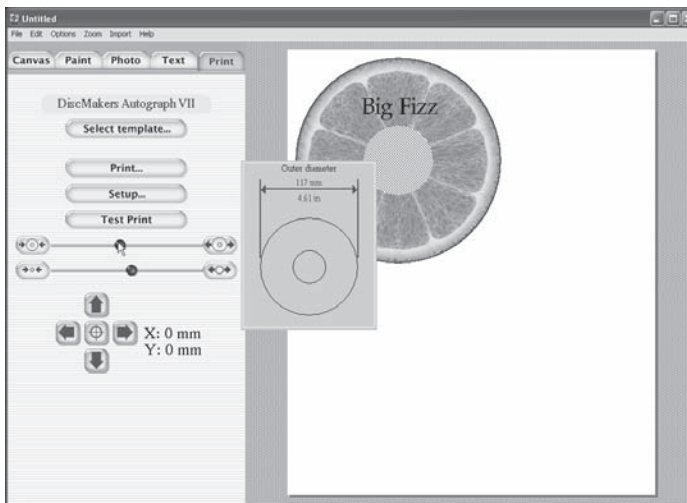
- 1 As you start Discus from the previous wizard, the New Projects window appears. Select the *CD/DVD* option to continue.



- 2 Discus displays a panel with five tabs—Canvas, Paint, Photo, Text, and Print—that control different aspects of the label creation. Select a background for your disc image from the choices on the Canvas panel.



- 3 Click the Text tab to display the options for adding text to the image. Click New to open an entry box for typing in the text. You can then use the text formatting options to change colors, fonts, placement, and orientation of the text.
- 4 Click the Print tab to display the printer settings and label options. These selections let you determine precisely the region on the disc where printing takes place. For Disc Makers media, the Outer diameter of the print region, as controlled by the upper slider, should be set to 117 mm, as shown in the figure.



- 5 Confirm that the selected template, shown just below the tabs, is set to Disc Makers Autograph VII. If not, use the Select Template button to change the template.
- 6 Click the Print button. The Windows Print dialog box appears. You can fine tune

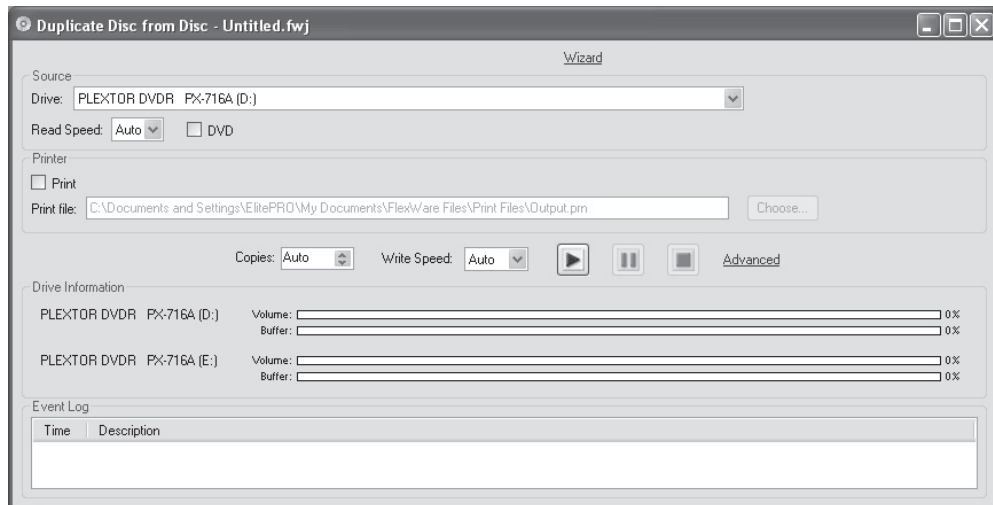
the quality settings and other options by clicking the Preferences button, but for this exercise, default settings are fine.

- 7** Confirm that the Disc Printer is selected. Select the *Print to file* option in the dialog box to direct the print output to an image file that FlexWare can use.
- 8** Click Print. The Print to File dialog box appears.
- 9** Type the filename and destination—`c:\output.prn`—into the Output File Name entry box. Click OK to confirm the entry and start the printing process. An image file will be created with the name `output.prn`. If an existing `output.prn` file is stored in the default location, Windows will ask if you want to overwrite it.
- 10** Minimize Discus to return to the Disc from Disc Duplication wizard. The wizard displays a selection box that allows you to choose the `output.prn` file as the source for the automated duplication and printing task. Once this image file has been selected, click Next to continue the procedure.

Note: Additional information on creating label images is included in the Elite Series User Guide and the Discus User Guide, which can be accessed through the Discus help system.

Duplicating discs for the first time

At the completion of the wizard, FlexWare returns to the main application window with all the appropriate settings established.



- 1** To start the duplication operation, first check to see if you have a master disc in the input spindle with two blank discs underneath it. Be sure to use the DVD check box if your master disc is a DVD.

- 2** Click the Play button in the center of the window. The Elite 2 duplicator pick arm rotates to the input spindle, lowers to pick up the master disc, extracts the master disc, and places it in the upper disc recorder. FlexWare then proceeds to make a temporary image from this master to use during the copy operation.
- 3** Once the image is made, FlexWare unloads the master and places it on the output spindle. The program then proceeds to load each of the blank discs and copy the image to them. Each of the copied discs is then loaded into the printer and the selected image is printed on the disc surface.
- 4** The operation ends when FlexWare unloads the completed discs onto the output spindle.

Note: If these operations do not proceed as described, check the following Problem Solving section or the Troubleshooting FAQ in the User Guide for suggestions as to how to proceed.

Problem Solving

Refer to this list of common problems if you have trouble getting through this Getting Started Guide. You can also consult the Troubleshooting FAQ in the User Guide for additional information or use any of the support options listed at the end of this guide.

Solving common problems

The duplicator won't power on.

The Elite 2 duplicator has two power switches—a master switch on the back of the cabinet next to the AC power cord input and a power switch on the left side of the cabinet. Ensure the master switch is in the On position (1) before pressing the power switch on the left side of the cabinet.

The duplicator drops discs or won't pick them up from the spindles or trays.

Sometimes the alignment of the duplicator pick arm is affected during shipping. To ensure that the pick arm is properly set up to move discs from point to point, refer to the procedure titled *Setting positions* in the User Guide.

The duplicator repeatedly rejects the blank discs that I'm trying to use in copy operations.

Make sure that you're using recordable CD discs with a CD master and recordable DVD discs with a DVD master. Also, the quality of the media and the selected recording speed can affect the rejection rate. Try using higher quality media (such as Disc Makers recordable discs) or setting the maximum recording speed lower during copy operations.

The duplicator robotics will not complete operations as directed and sometimes the movements of the pick arm are erratic.

The optical sensors contained in the duplicator can be affected by very strong light—either direct sunlight or strong artificial light. Try moving the unit to a location that is not as bright to see if this resolves the problem.

When I try to run FlexWare, a message appears saying that the Autoloader has not been detected and the software won't start.

FlexWare must be able to recognize the Autoloader each time the program starts. Check to make sure that all cables are properly connected and the autoloader is powered on. Then, restart your PC. If this doesn't work, try reinstalling the software from the FlexWare installation disc.

Getting additional help

Each Elite series duplicator includes a variety of technical support options that are available as long as you own the equipment.

- Many common problems can be resolved quickly by consulting the *Troubleshooting FAQ* in the User Guide. Try this option first if you encounter difficulties.
- You can access details about software upgrades, updated product information, and other helpful owner information at www.dmelite.com.
- For prompt technical support by email, refer your queries to techsupport@discmakers.com.
- Toll-free technical support can be obtained from 9:00 am to 5:00 pm Eastern time Monday through Friday. Call 1-888-800-4041 for telephone support on any duplicator-related issues.

Copyright and contact details

This document and related materials are provided “as is” with no warranties, express or implied, including but not limited to any implied warranty or merchantability, fitness for a particular purpose, non-infringement of intellectual property rights, or any warranty otherwise arising out of any proposal, specification, or sample. Disc Makers assumes no responsibility for any errors contained in this document and has no liabilities or obligations for any damages arising from or in connection with the use of this document.

Elite and ElitePRO are trademarks of Disc Makers.

*Other names and brands may be claimed as the property of others.

Disc Makers®
7905 North Route 130
Pennsauken, NJ 08110-1402
1-888-800-4041 (Toll-free)
1-856-661-3457 (Fax)
www.discmakers.com