

## FOREWORD

It is illegal to duplicate copyrighted discs for any reason other than personal use, unless you happen to be the copyright owner. The Elite recording unit is intended for use only to those identities that are the owners of the copyright or are properly licensed to use the copyright.

Copyright, Trademark and Service Mark Acknowledgement

Manual Revision 060804 Rev 2

Discmakers and the Discmakers logo © Discmakers

Elite is a trademark of Discmakers

Microsoft, Windows, XP and .NET are registered Trademarks of Microsoft Corp.

Intel and Celeron are registered Trademarks of Intel Corporation

Plextor is a registered trademark of Plextor Corporation

Pioneer is a registered trademark of Pioneer Electronics

Sanyo is a registered trademark of Sanyo Corporation

Padus and Discjuggler are registered trademarks of Padus Inc

Primera is a registered trademark of Primera Technology, Inc

Signature IV is a trade name of Primera Technology, Inc

Discus is a trademark of Magic Mouse Productions, Inc

FlexWriter is a trademark of Amtren Corporation

All other trademarks and registered trademarks are the property of its respective owners.

This manual and its contents © 2001 2002 2003 Amtren Corporation

The Elite is manufactured under license of Patent 6,141,298 and other Patents Pending

## Table of Contents

Welcome and Introduction	3
Hardware Overview	4
Minimum Hardware and Software Requirements	5
Unpacking the Hardware (Step 1)	6
Installation of CD Pick Arm (Step 2)	7
Installation and Connection of PCI Card into Customer PC (Step 3)	8
Installation of CD Printer (Step 4)	9
Installation of Ink Cartridges (Step 5)	10
Connection of FireWire, Serial and AC Power (Step 6)	11-12
Network Connection (Step 7)	13
Installation of Startup CDR (Step 8)	14-15
Installation of Recording Software (Step 9)	16-17
Installation of Autoloader Command Console (Step 10)	18-20
Installation of Autograph VI Drivers (11)	21
Installation of Labeling Software (Step 12)	22
Disabling Auto-Insert Notification for your CD ROM Drives (Step 13)	23
Selecting CD Recorder Drives & Printing Port (Step 14)	24
Loading Media & Using DiscJuggler (Step 15)	25-27
Design Print Image for Media (Step 16)	28-32
Set Print Image for DiscJuggler (Step 17)	33
Cycle Only Option (Step 18)	34
Start the Job (Step 19)	35
Using Drive Assigner	36
Troubleshooting Guide	37



## Welcome

Thank you for purchasing the Elite CDR/DVDR publisher. This system has been designed and is manufactured under strict quality guidelines. This product will provide years of dependable and trouble free operation.

## Description

*125/200 Piece Input    CDR or DVDR Drives    2 Year Warranty on Robotics*

The Elite is a multi writer desktop CD-R or DVD/CD-R copying and printing solution in a single footprint. As the most versatile duplication system on the market today, the Elite offers you endless possibilities to automate your CD-R or DVD/CD-R duplication and printing needs.

The fast and advanced Center-Pick autoloading mechanism will provide ease of use and trouble-free operation. The Elite's components are based on industrial design technology that will provide years of trouble-free operation.

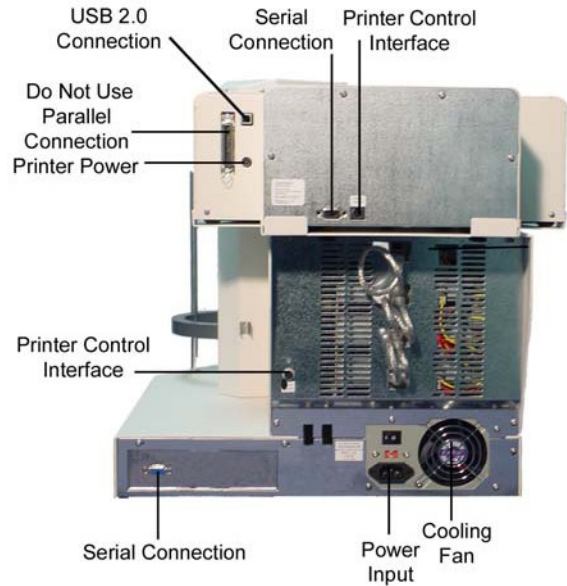
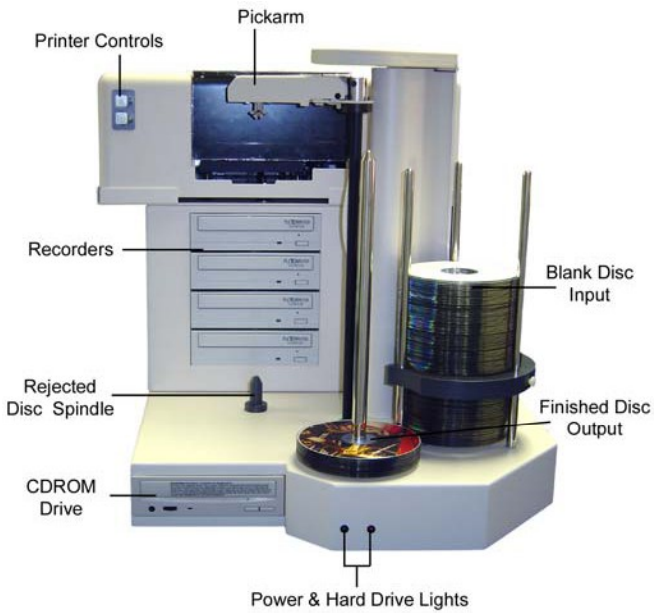
The Elite is provided with all the hardware and software that allows easy installation with customer provided computer hardware. Please be sure to review the minimum computer requirements. Failure to observe these requirements could affect the performance of your Elite and quality of your recorded product.

The Elite comes standard with CDR or DVDR/CDR combo writers which are controlled by Padus's® award winning DiscJuggler® recording software. The recording software provides a smooth duplication process with trouble-free operation. The DiscJuggler® software is firmly embedded within the Elite's system providing a seamless and reliable solution to the user

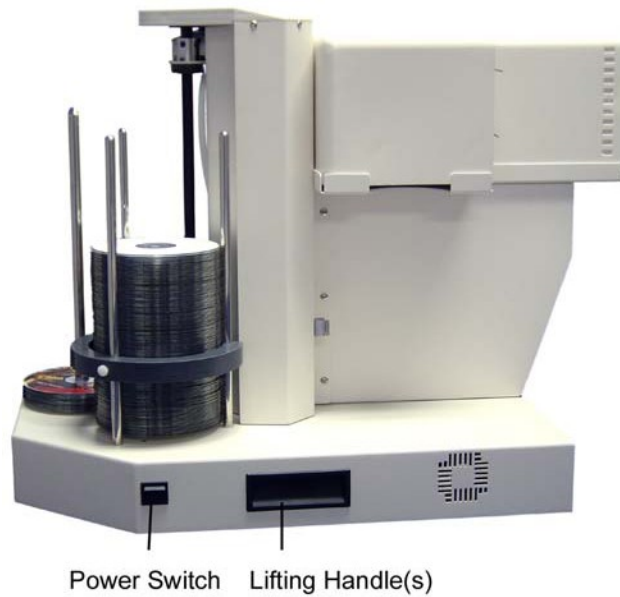
Discus© labeling software is included to enhance your product. The Discus© label making software is a simple and easy to use program that will enable you to create professional quality CD/DVD labels.

## Hardware Overview

Before starting the installation, please review the Elite Hardware and Functions



Note that the front CD ROM and Hard Drive light are only available on Pro models.



## Customer Minimum Hardware and Software Requirements

Desktop systems change rapidly and the Elite was designed for use with PC systems that are relatively new models. It is recommended that you operate your new Elite with the best possible hardware. This will ensure you a recording and printing system that will operate smoothly and efficiently.

The following are minimum requirements for the PC to which the Elite is to be connected. These are very important. Due to the high speed of the Writers, sufficient memory and FAST hard drives are required.

### Minimum PC Requirements:

1 - 2 Drive Elite	3 - 4 Drive Elite
1.0 GHZ Celeron® Processor or equivalent.	1.7 GHZ Celeron® Processor or equivalent.
256 MB RAM.	512 MB RAM.
7200 RPM 20 GB hard drive with 50% free space for CDR unit.	7200 RPM 20 GB hard drive with 50% free space for CDR unit.
7200 RPM 40 GB hard drive with 70% free space for DVDR unit	7200 RPM 40 GB hard drive with 70% free space for DVDR unit
Free External Com Port (for RS232 to Elite)	Free External Com Port (for RS232 to Elite)
Free PCI Slot (for FireWire® card)	Free PCI Slot (for FireWire® card)
Free Parallel Connection (for CD printer)	Free Parallel Connection (for CD printer)

### Software Requirements:

Windows 2000 or Windows XP

*This brief setup guide is provided to get the Elite operational out of the box. Once you get the system operational, complete online help can be accessed from the DiscJuggler HELP Section.*

## Step 1

### Unpacking the Hardware:

Your system was shipped in 1 box and contains the Elite unit, Firewire PCI Card and cables. If you purchased the CD Printer, it was shipped in a separate box.

Carefully open the box and remove the top protective cardboard sheet. You will then be able to remove the following:

- ✓CD Pick Arm
- ✓FireWire PCI Card Box
- ✓Printer Control Cable
- ✓Printer USB Cable
- ✓DB9 Serial Loader to PC Cable
- ✓AC Power Cord
- ✓Software and Manual

Set the components on a table that will hold the Elite unit and your PC. Next, by lifting straight up, carefully remove the foam container and foam protection over the Elite unit. You will see the Elite in a plastic bag. The Elite has lifting hand holders on either side, locate these and remove the Elite from the box. Remove the Elite out of the bag and place all shipping components back into the shipping carton for future use. It is important to always ship the Elite in its proper container so storage of the box and accessories is important. In the event you misplace your packaging and need to ship the Elite contact the service department and a new shipping container will be shipped out.

Next remove the printer from its shipping carton and place all the components on the table.

Account for all the components and proceed to installation of the CD Pick Arm.



Main Box Opened and parts located in top section



Remove foam sections and Access the Elite Main Unit



Locate Lifting handles on the Elite Unit and lift out

## Step 2 Installation of CD Pick Arm

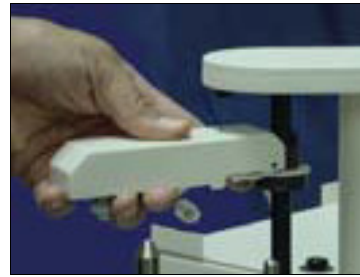
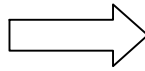
The CD Pick Arm needs to be installed onto the rotate arm. Remove the pick arm from the bubble wrap packaging. Included with the arm will be a bag containing two black plastic retainers. These retainers are used to hold the pick arm onto the rotate arm.

Hold the pick arm in one hand. Place the arm onto the slotted resting tray on the upper section of the column. Plug in the RJ12 (telephone) type connector **(NOTE: MAKE SURE THE CONNECTOR RETAINER HAS SNAPPED INTO PLACE BY PULLING GENTLY ON THE CABLE)**. Then secure the arm into place by pressing a retainer into each side of the pick arm. These steps can be reviewed in the pictures shown below.

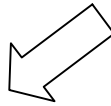
The pick arm should freely float or pivot from the point where the retainers were installed.



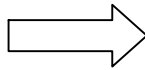
Locate Pick Arm & Retainers  
Step 1



Hold Pick Arm in Place & Connect RJ12 Connector  
Step 2



Install / Press in the Black Plastic Retainers  
Step 3



The Pick Arm after Installation  
Step 4

### Step 3

Installation FireWire® PCI card into customer supplied PC.

The Elite is shipped with a FireWire® PCI IEEE 1394 Host Adapter. Locate this card and remove the PCI Card and the card installation instructions.

*Please note that the Elite will only work when used with the following operating systems:*

*Windows 2000*

*Windows XP*

Refer to the instruction guide included with the card for details on installing the 1394 PCI Card into your PC. Please observe safety and static discharge instructions.

Please be sure this step is complete before installing any software or hardware that is provided with the Elite.



## Step 4 Installation of the CD Printer

Install the Printer and connections per this step. Then proceed to the install CDROM, click on Install Autograph VI Drivers and follow the steps as they are provided.

The Elite is preset for the Autograph VI and all operating label software and drivers are included with the installation CDROM.

Place the printer into the print holding tray located at the top of the drive stack. Holding the printer with hands on the left and right side, insert the front on the printer at an angle first, and then let the back section “drop into” place. The printer should be securely inserted into the print holder tray and should be completely level.

Plug in the USB printer cable provided with the Elite into the rear of the printer. **DO NOT** plug the other end of the USB cable into the rear of your PC until directed to do so later when you install the printer’ drivers.

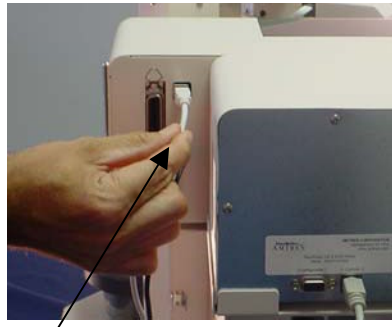
Plug in the Printer mini din control cable (this is similar to a keyboard cable and has connectors on both ends) into matching connectors in the rear of the printer and the rear of the Elite.

Place the AC Power Adapter that was provided with the CD Printer next to the rear of the printer and plug into a standard 115V AC outlet. Plug the other end into the power connector on the rear of the printer. The printer will perform a basic internal test and then wait for additional commands from the operator or the software.

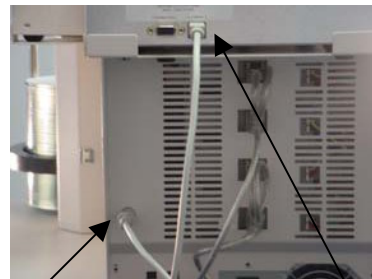
Press the TOP button to turn the printer on and off. Use the lower button to open and close the tray. Turn the printer on so that you can install the printer cartridges.



Install Printer by allowing front section to rest in place, then lower the rear section into the tray.



Connect the Printer USB Cable to the printer



Connect the Printer DIN Control Cable from the Printer to the Elite

## Step 5 Installation of the CD Printer's Ink Cartridges

When you lift up the front plastic cover of the printer, the ink cartridge holder will slide into the center of the opening enabling you to replace the ink cartridges.

If the pickarm will not allow the front plastic cover to open, then you may gently push the pickarm downward by applying downward pressure at the base of the pickarm where it wraps around the column. NEVER attempt to rotate the pickarm or try to push it downward by pressing down on the top of it. Doing so will damage the Elite's picking mechanism.

Unpack the included ink cartridges. Be sure to remove the tape from the cartridges. Do not touch the metal contacts or ink nozzles. Release the latches on the cartridge holders. Place the ink cartridges in their respective color-coded holders. The black cartridge goes in the left slot of the cartridge holder and the color cartridge in the right slot. To secure the cartridges, close the top of the cartridge holder. You should hear a "snap" sound as they latch back into place. Close the printer door.

## Step 6

### Installation and Connection of AC Power, FireWire® and Serial Link

Plug the FireWire® and Serial Cable into each of their identified connections located on the rear of the Elite unit. These connections are identical to the common connections of standard computers. If you have multiple recorders, then short FireWire® cables are used to link each recorder to the next. The long FireWire® cable connects the chain of recorders to your PC's FireWire® card. It does not matter which recorder is linked to your PC's FireWire® card.

Arrange your PC hardware on the same table as the Elite unit. Connect the other ends of the FireWire® and Serial Cables to their respective connections on your PC. Plug the power cord into the power supply of the Elite, also located on the rear side. Plug into a standard 115VAC outlet.

It is recommended to plug these components into a common plug strip with AC filtering, as is common with most high-end computers. Also if the unit is to be located in an area where the utility or power company experiences frequent outages, utilizing a UPS is strongly recommended.



Rear View of FireWire® Connections



Loader Serial Connection



Drive FireWire® Connection



Printer Control Connection



AC Power Connection

Please review your entire unit and be sure that you have the following:

#### Four cables connected to the Elite Unit

1. Serial cable running from your PC's serial port to the serial port on the rear of the Elite.
2. Printer control cable running from the rear of the Elite to your CD printer.
3. FireWire® cable running from your PC's FireWire® card to the FireWire® connector of the CD recorder on the rear of the Elite. Note that if you have multiple recorders, additional FireWire® cables are used to "chain" the drives together.
4. AC power cable from the power supply on the rear of the Elite to a standard wall outlet.

#### Three cables connected to the printer

1. Printer control cable from your Elite unit
2. USB printer cable that will plug into your PC
3. Power cable from a standard wall outlet.

#### Two cables connected to your PC

1. FireWire® cable running a recorder of the Elite unit.
2. USB printer cable that is NOT yet plugged into your PC from the CD printer.
3. Serial cable running to the serial port on the rear of the Elite.

## Step 7 Network Connection

You may connect the Elite to your existing computer network. It may be necessary to change some of the Elite's network settings before it will function properly on your network.

Connecting the Elite to your network will allow you to access shared folders and drives on other computers in the network. The DiscJuggler.Net software allows other users on your network to submit CD duplication jobs to the Elite from their desktop. If your network includes access to the Internet, then you can easily download software updates as they become available.

## Step 8 Installation of Startup CDR

Locate the Installation and Support CDROM, insert into your PC's CDROM drive and it will automatically open to a setup screen. *Note: If your CDROM drive is not set to autoplay, open the CDROM and click on [click\\_here.htm](#).*

Once the Installation CDR is deployed, you will have several options displayed on the screen.

Each of these options are briefly outlined on the following pages.

### **Installation and Support CD**

[Install 1-2 Drive CDR/DVDR Software](#) or [Install 3-4 Drive CDR/DVDR Software](#)

Installs the following three programs:



DiscJuggler Pro 4.1 Local Batch Mode Duplication from any source. This software will be used to master your CDR/DVDR's and control the autoloading-printing process.



ImageJuggler 4.1 Local FAST Duplicate and Print Mode with asynchronously operation of the drives and the printer. This mode is best used for medium to high volume production tasks. The production output will be significantly higher than the batch mode. To use the ImageJuggler program, you must first create an image of your CD using DiscJuggler Pro. The ImageJuggler should only be used by the experienced operators.



Network Console Icon. This allows login and setup of the Network Server Operating Platform. This package is set to login automatically upon opening the package. The console ICON will appear in the lower right desktop area when it is deployed. This package should be operational at all times to service requests from the clients on your network. This service of the client work will not impact the local jobs from either DiscJuggler Pro or ImageJuggler.

#### [Install AutoLoader Command Console Program](#)



The ACC (Autoloader Control Console) provides a graphical interface allowing you to troubleshoot, update, and adjust your Elite unit. This is a useful utility for setup and maintenance of the Elite. You may have to install the .NET Framework, also located on this CD, before installing this software.

### [Install Autograph VI Drivers](#)

This link will display detailed, step by step directions for the setup of your Autograph VI drivers.

### [View Hardware Setup PDF Document](#)

This is an electronic PDF version of this installation manual.

### [View Autograph VI Setup PDF Document](#)

This is an electronic PDF manual for the Autograph VI.

### [Register Your Elite](#)

If your PC is currently connected to the Internet, click on this option to register your Elite online. You are encouraged to register your Elite to allow you to be notified of software updates.

### [Check for Software Updates/Upgrades](#)

If your PC is currently connected to the Internet, click on this option and you will be directed to the software support download site. You can compare the version you are installing or are currently using, if it is an older version you can download an update – FREE! Be sure to download the installation PDF and review before upgrading your software.

### [Install .NET Framework](#)

This is a copy of the Microsoft® .NET installer. If your PC does not already have the .NET framework, the ACC installation will fail and you will need to install this program.

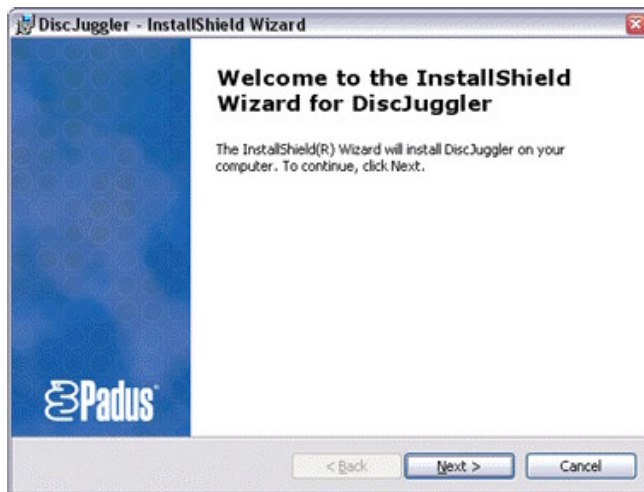
### [Install Client CDR/DVDR Software on Network PC's](#)

You may carry this CD to the other computers on your network and use this option to install the client version of DiscJuggler. This software is used to submit jobs to the DiscJuggler server that runs the Elite directly. If you have DiscJuggler.NET, multiple clients can submit multiple jobs. If you have DiscJuggler Professional, then only one client can submit a single job at a time.

## Step 9 Installation of Recording Software (CD Step 1)

The first option is to install the recording software. Select either the [1-2 CDR/DVDR Software](#) or the [3-4 CDR/DVDR Software](#) depending on the number of recorders your unit has. You will have a choice between “OPEN from location,” or “SAVETO.” This choice will depend on your hardware configuration. If you choose SAVETO, then save to your DESKTOP so you can later delete the setup file. The software installation will begin automatically.

**Note:** Keep the Registration Key [DJ4A-0000-0000-0000-00] on the back of the Sleeve handy; you will need to enter this number when installation of the software begins. Play close attention to the Key and be sure to enter exactly as it is written on the label.



The DiscJuggler installation will begin with this screen. Click Next.

Enter your name and company information and the Registration Key [DJ4A-0000-0000-0000-00] on the back of the CD Sleeve and on the front page of this manual. Play close attention to the Key and be sure to enter exactly as it is written on the label.





Click complete and Next



The installation is complete. Click Finish and the DiscJuggler Icon will be placed on your desktop.



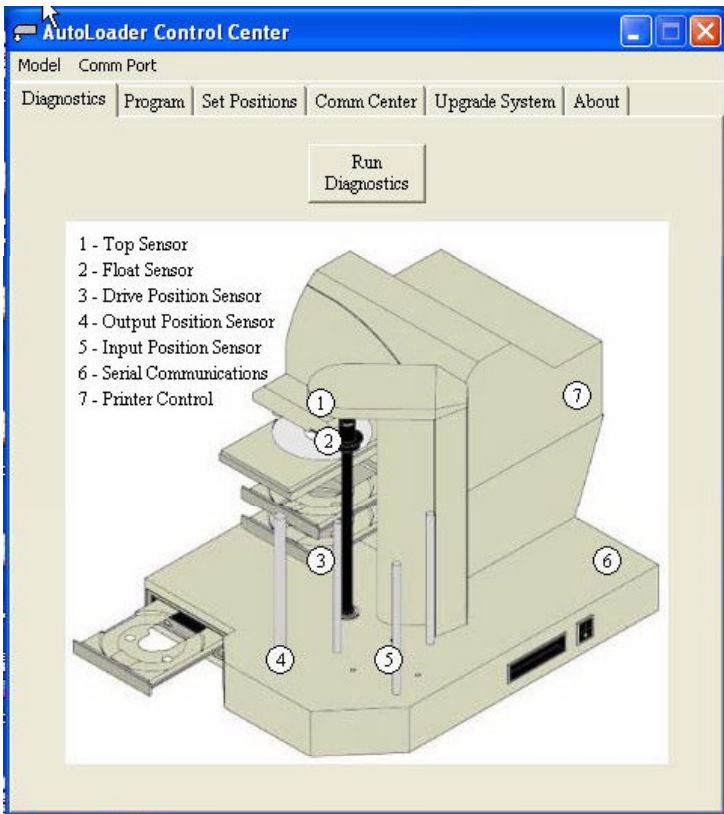
Step 10  
Installation of Autoloader Command Console  
(CD Step 2)

Next you can install the ACC (Autoloader Command Console) program. This is a utility program used to align and support the Elite unit.

Double click on the install [Autoloader Command Console Program](#) and choose Open from location. The ACC will install, please follow the instructions.

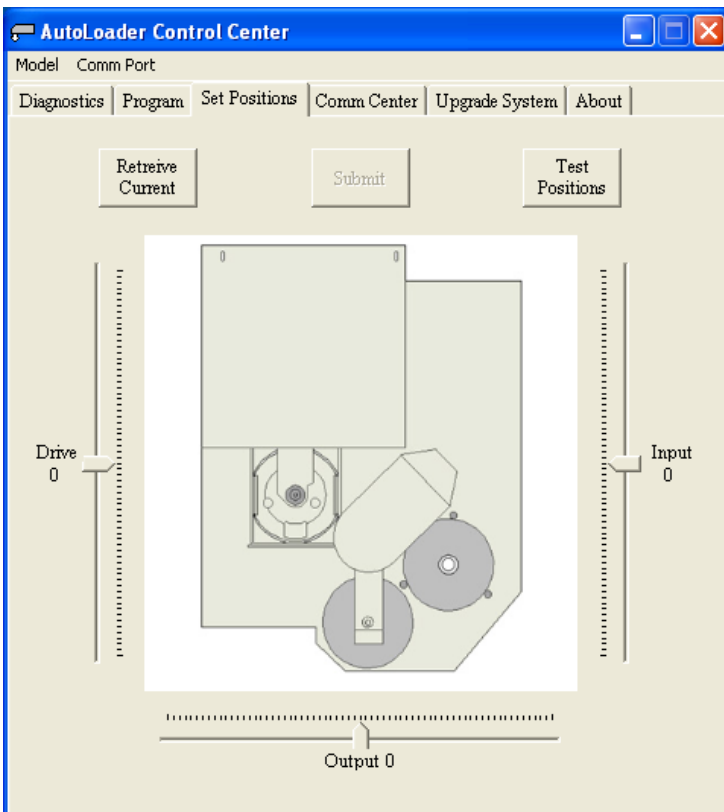
NOTE: If at the beginning of the installation the installer cannot locate the Microsoft Dot.Net Framework, you will need to cancel installation and click on [Install .Net Framework](#). Please follow the instructions and once the .NET Framework is installed, proceed with installation of the Autoloader Command Console.

Once the ACC has been installed, review the following two pages to understand the features and functions of the ACC.



The ACC allow you to troubleshoot and update your Elite unit. If any electrical or mechanical issues occur, run the Diagnostics. The ACC Diagnostic routine will test all functions of the Elite and provider graphical feedback.

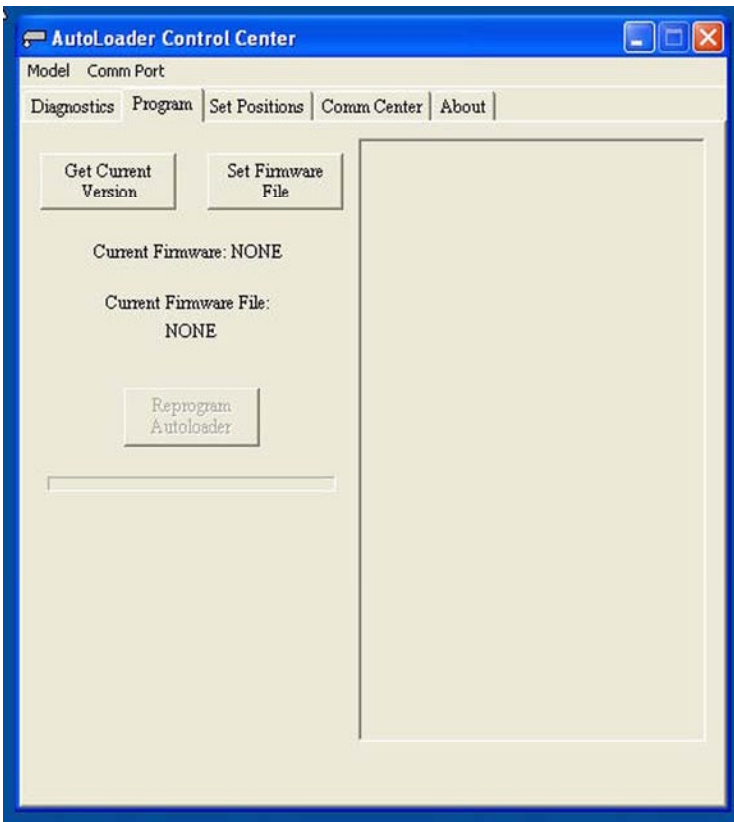
The **Comm Port** setting enables you to chose between using COM1 and COM2 when communicating with the Elite. This choice depends upon which of your PC's serial ports you plugged the Elite's serial cable into.



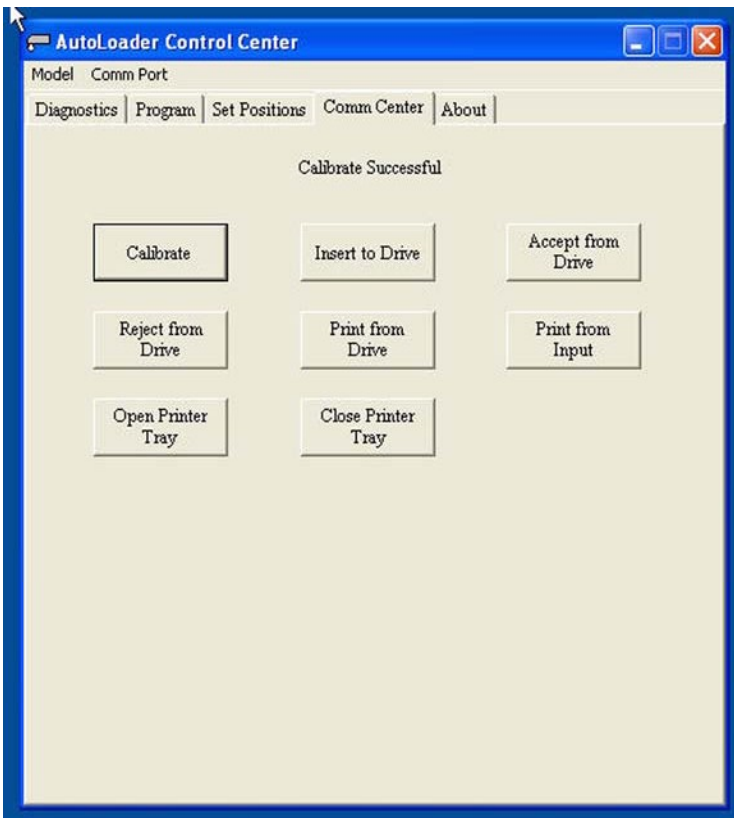
### ! CAUTION !

This screen allows you to adjust the position of the Picker Arm when placing CDs in the recorder and printer. **DO NOT** change these settings unless instructed to do so by a qualified technician.

This screen provides an easy way to update the Elite's firmware if changes are made in the future.



This screen offers an easy way to recalibrate your unit if the need should ever arise.



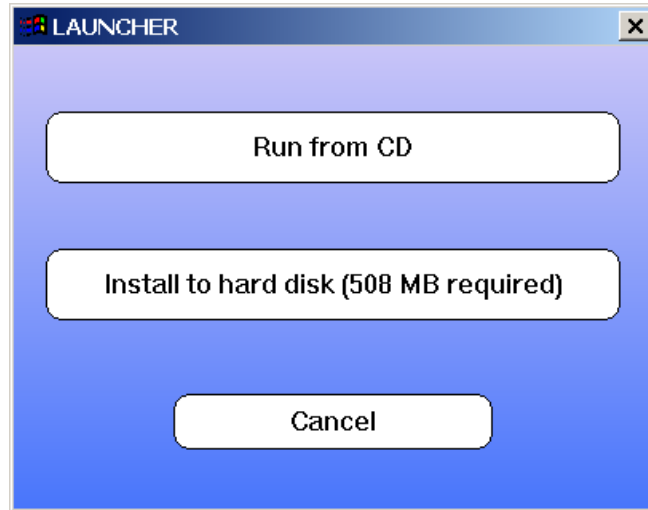
Step 11  
Install Autograph VI Drivers  
(CD Step 3)

By clicking on the [Install Autograph VI Drivers](#) link on the Installation and Support CDROM, you will open a second page with instructions detailing the installation and setup of your Autograph VI. Please follow these directions exactly. Failure to do so could result in inferior printing results.

## Step 12 Installation of Labeling Software

Locate the Discus CD Labeling Software CDR and insert into your CDROM drive on the PC that is connected to the Elite. Note the CD key on the CD's paper sleeve. It is in the format of XXX-XXX-XXX. This key will be needed to complete the Discus installation.

The menu below will be displayed. Choose install to hard disk. If your CDROM drive is not set to autoplay, open the CDROM and click on *Launcher.exe*. NOTE: Be sure that your PC can handle the 500MB and not affect the minimum requirements of the Elite hardware.

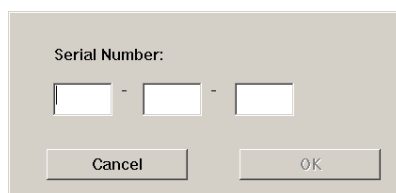


When the Discus Labeling Software begins to install, it will first load Apple QuickTime onto your PC. Following the instructions on the installation. When the screen asks to register the QuickTime, simply click on Proceed without entering anything.

Once the Discus installation is complete, a DiscusLE icon will be placed on your desktop.



Click on the Discus LE icon and verify that the Discus installed correctly. The following screen will appear. Type in your Discus key and click the OK button. Close Discus and remove the CDROM.



Type in your Discus Key.

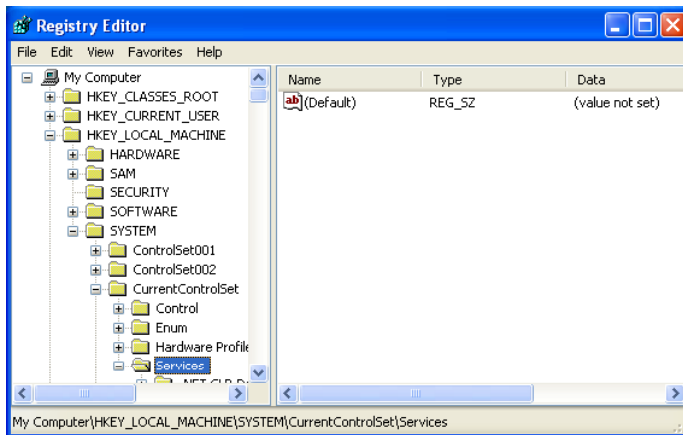
## Step 13

### Disabling Auto-Insert Notification for your CD ROM Drives

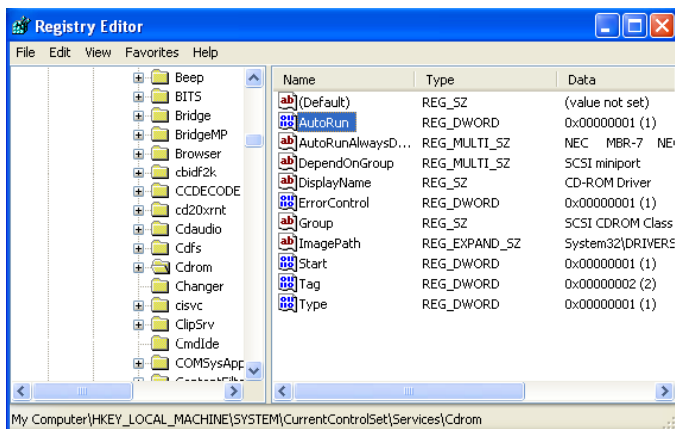
If your computer automatically tries to play a music CD, or launch a program when a data CD is inserted into your CD ROM drive, then you will need to turn off your computer's "Auto-Run" feature. You **MUST** disable Auto-Run for the Elite's recorder(s). Otherwise, when you insert a master CD to be copied, your computer will try to automatically play or run whatever is on that CD.

One easy way to disable Auto-Run in Windows XP and 2000 is as follows:

Click on the Windows Start button, select Run. Type "regedit" into the space. Click OK.

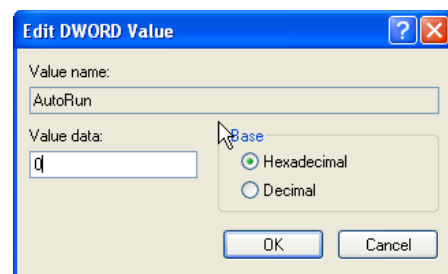


You will see a screen similar to the one at the left. Click on HKEY\_LOCAL\_MACHINE, then SYSTEM, then Current Control Set, and then Services.



Scroll down until you find a folder called "CDROM" and click on it. On the right side of the screen, you will see an "Autorun" entry. Double-click on the file name and a new window will open, allowing you to change the value from a "1" for enabled, to a "0" for disabled. Below is a picture of this. Click OK and close the Registry Editor.

Reboot your computer.

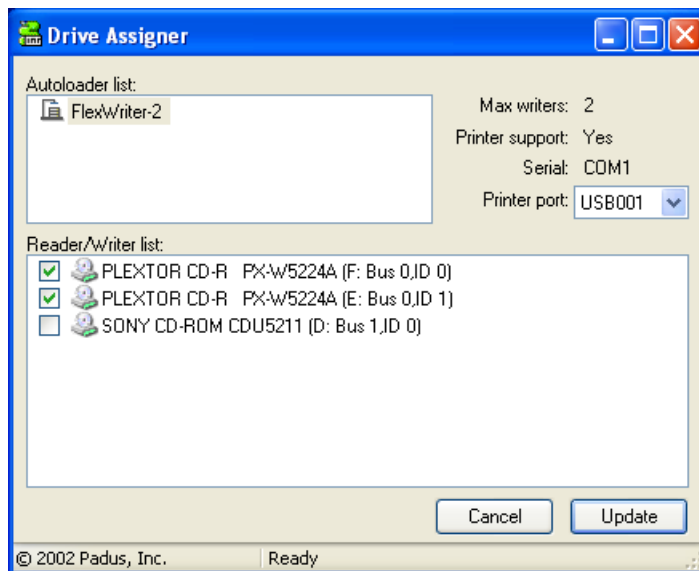


## Step 14

### Using Drive Assigner to select Recording Drives & Printing Port

Before you can use the Elite to duplicate and print CDs, it is necessary to specify which CD/DVD burners and printer port are to be used with the Elite. Ensure that all the cables are properly connected. Turn on the Elite by pressing the power switch located on the unit's front right side. A small green LED located on the front of the unit should light up.

To run Drive Assigner, select Start, All Programs, Padus DiscJuggler, and click on Drive Assigner. DiscJuggler will review the system and display the devices that it has located. Select the writers that are located in the Elite unit by clicking on the boxes beside the drives. Do not select any non-writing CD ROM drives. Also, select the appropriate printing port for DiscJuggler to use when printing CD labels. The Autograph VI will use USB001. Click on Update and then OK when finished with your selection. This process will assign only the recorders of the Elite to DiscJuggler and will set which port the software uses to communicate with your CD printer. The assignment will remain set unless you run the Drive Assigner again and change your settings.





## Step 15 Loading Blank Media & Using DiscJuggler

Ensure that all the cables are properly connected. If you have not already done so, turn on the Elite by pressing the power switch located on the unit's front right side. A small green LED located on the front of the unit should light up. If not, check to see that the power supply located at the rear of the unit is turned on and that it is properly connected to a standard working 115V power outlet. You are now ready to start creating and duplicating CD/DVDs.

The next steps will take you through a typical setup and usage of the Elite. It is recommended to follow these steps and produce a test job, then move on to the many other functions and features of the Elite.

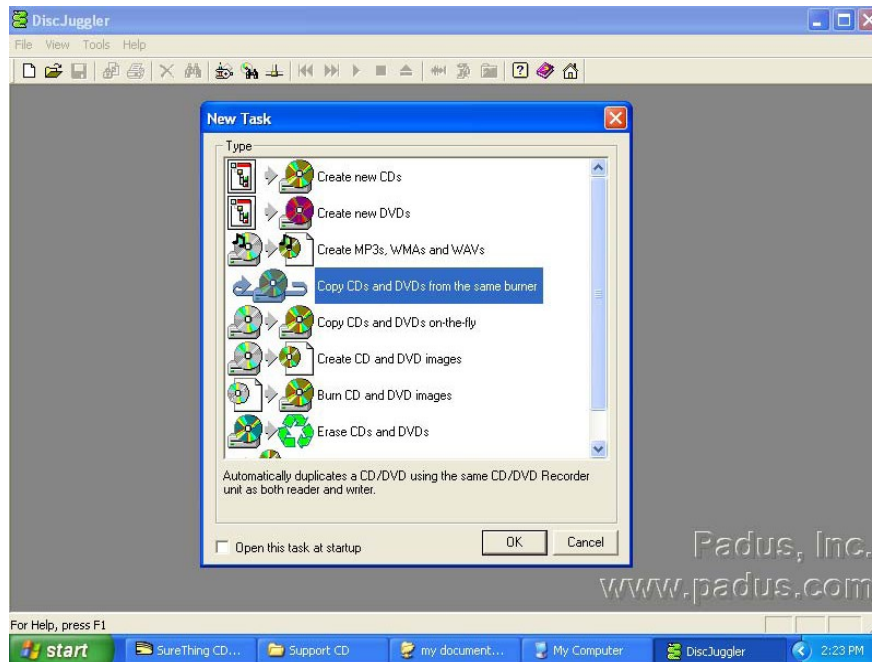
Load blank Ink Jet media, data side down, onto the input spindle. The input spindle has three silver rods located around the outside edge of the media. Please be sure the media does not stick together and that the media lays flat in the input spindle. You may use the included gray plastic alignment rod to help ensure that the CDs are properly aligned.

Place a CD-R to be copied on top of the blank media in the input spindle. This will be the 'master' for this test run. Use a image of 30 MB or less to allow the test run to be faster.

On the Desktop, click on the [DiscJuggler ICON](#) and the DiscJuggler will run.

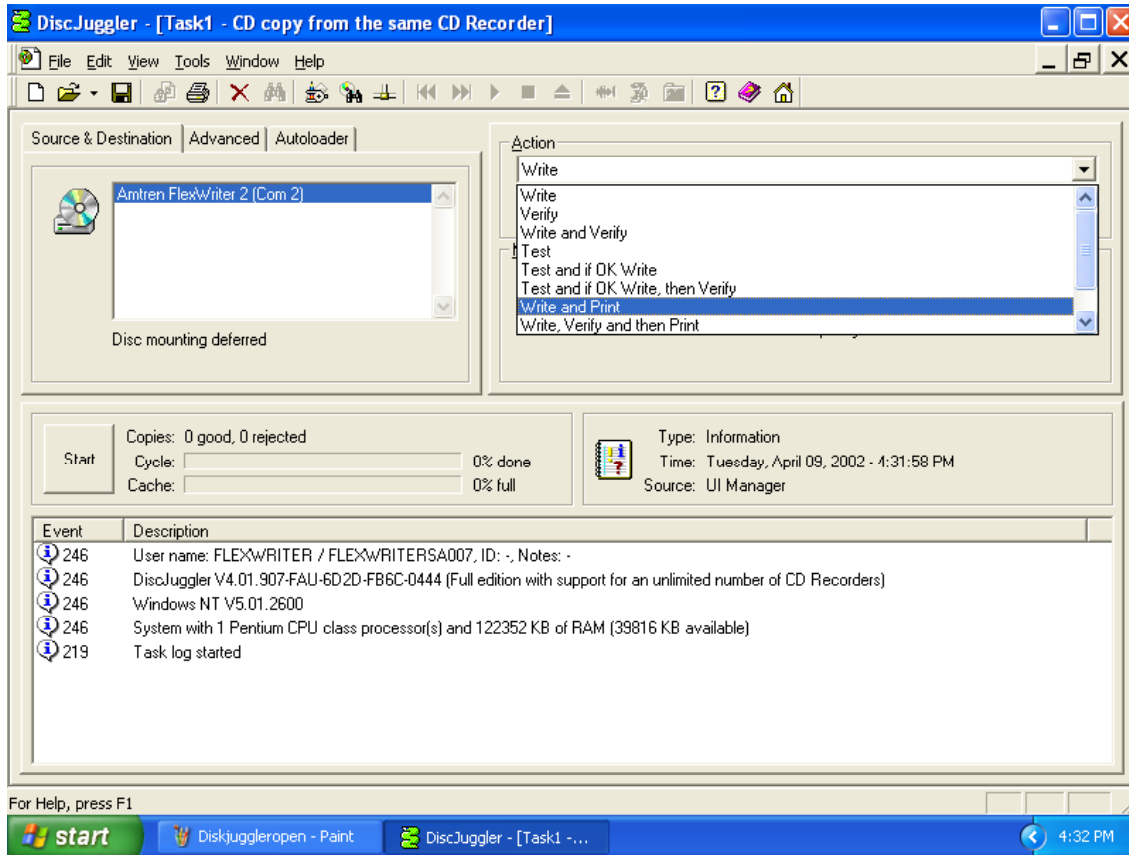
Click on [File](#), choose [New](#) and the panel below will open.

Choose [Copy CDs and DVDs from the same burner](#)  
(This task will take the CD on the top of the Input Stack; load a temp image to the hard drive and copy from the temp image.)

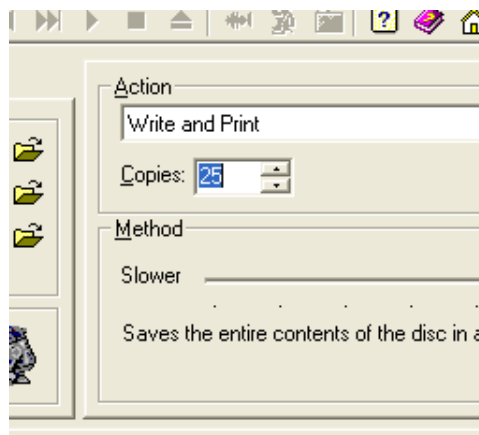


Screen of Start of a New Job

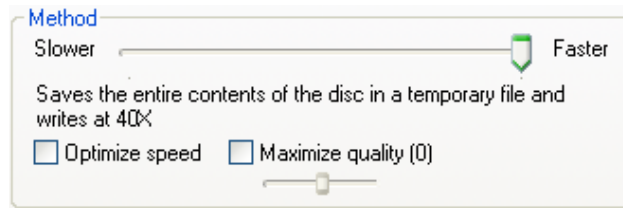
After you have selected **Copy CDs and DVDs from the same burner**, the panel below will open. Choose **ACTION** from the upper right section. On the PULL DOWN select **Write and Print** if you have a CD/DVD printer. Otherwise, select **Write**.



Under the **Source and Destination** tab, ensure that the Elite unit is selected, and NOT a recorder on your PC. Next enter the number of **Copies** or disks you want to produce, we have chosen 25 as shown below:

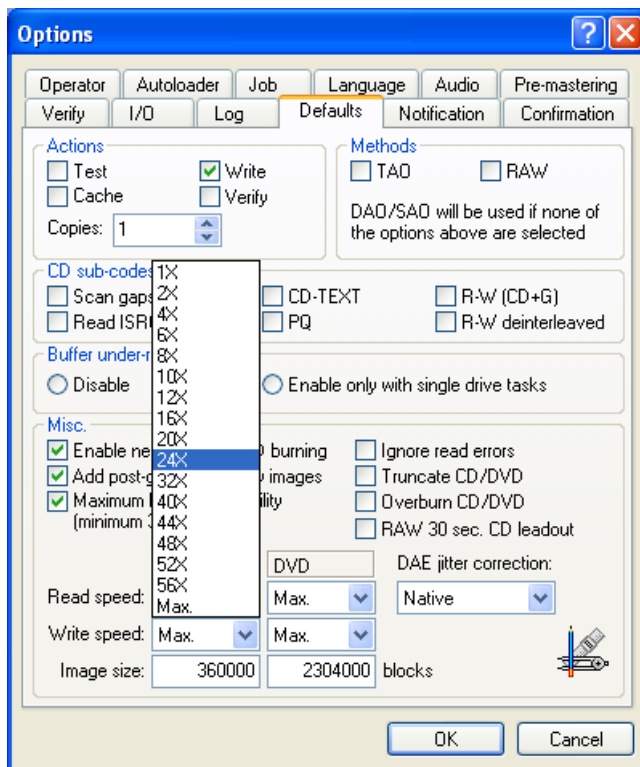


Below **Copies** is an option called **Method**. The “slider bar” allows you to select your recording speed. The maximum possible speed will depend upon the model of recorder in your unit and the type of media you are using. Since nearly all the CDR and DVDR media on the market today will burn at 24X and 2X respectively, we suggest those as the initial default recording speeds. Once you successfully complete your first job, you can try to burn at higher speeds. Results will vary depending on which brand and type of media you use.



Burn Speed Selector

Once you have found a burning speed that works well with your media, you can make that speed the default. To do this, click on the **Tools** menu located at the top of the DiscJuggler window. Then click on the **Options** menu. Next, click on the **Defaults** tab if it is not already selected. You will see the following window.



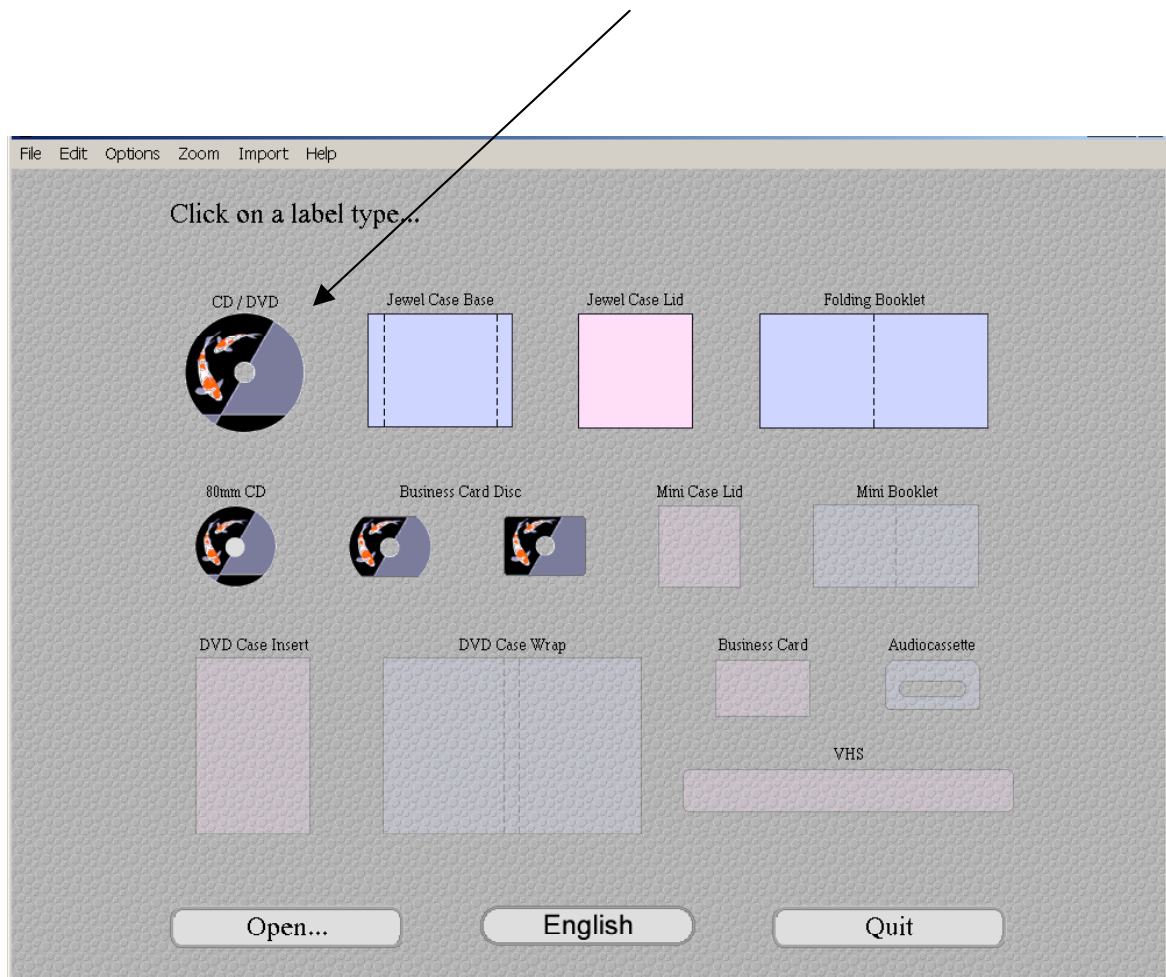
Here, you can change the default write speed for CDs and DVDs to the speeds that work best with your media.

## STEP 16 DESIGN PRINT IMAGE (LABEL) FOR MEDIA

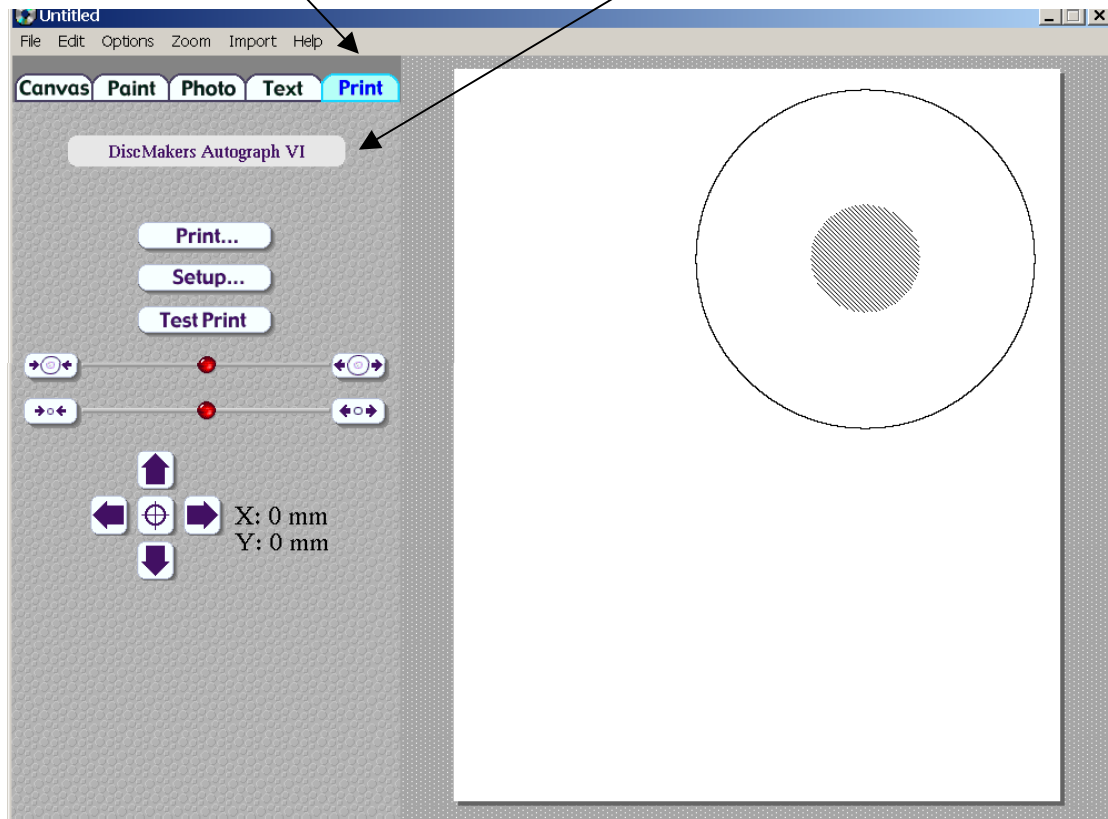
*Note: You must be using an Autograph VI CD Printer in the following steps. If you are using another printer refer to documentation that includes your printer.*

Next you have to prepare a print image that can be used by the DiscJuggler software to print text or graphics on top of the media. To do this you will have to use the Discus labeling software provide with the Elite. Minimize the DiscJuggler software and on the Desktop, click on the Discus CD Labeling ICON. The Discus software will open.

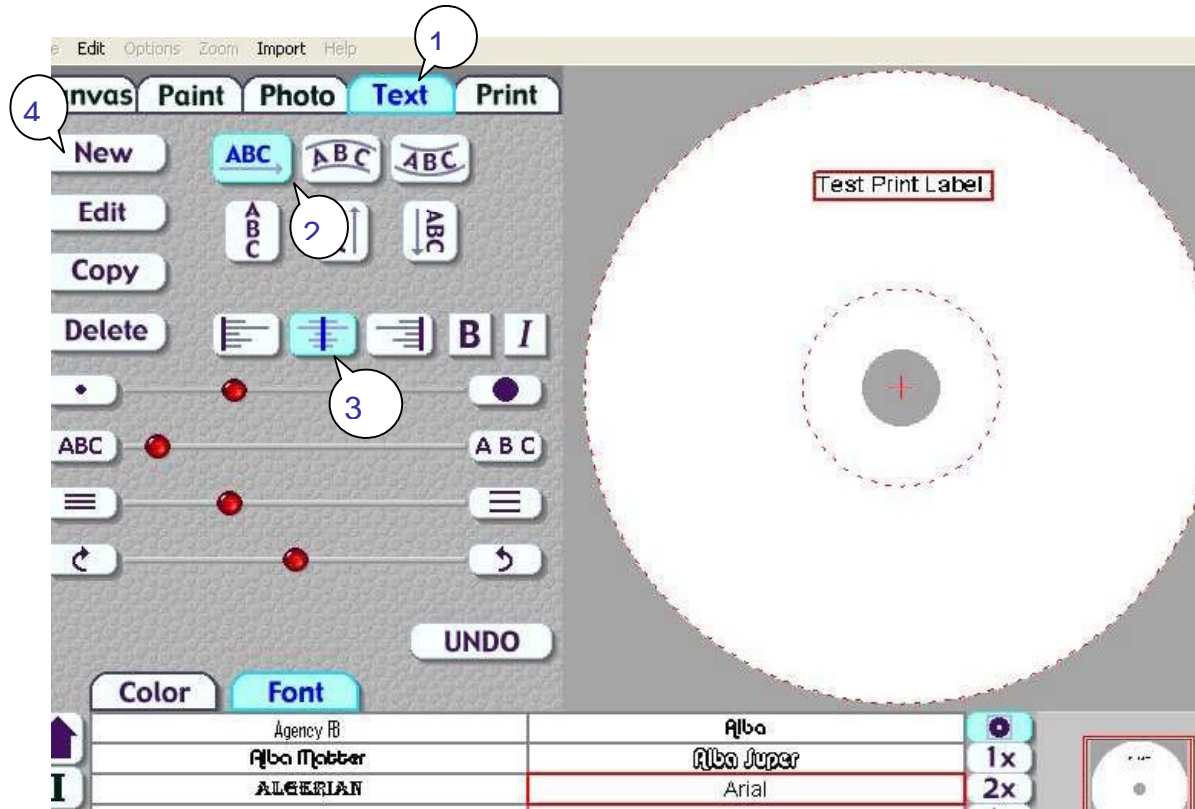
When the Discus screen below opens, click on [CD Label](#).



Choose the **Print** folder at the top. Verify that Discus is set for the **Autograph VI**.



Choose the **Text** (1) folder at the top. Click on an **ABC** (2) button and the **Centered** (3) button. Then click on the **New** (4) button. Type in the text as shown in the figure below.



Once you have completed your test label, save it by clicking on File and save. Choose a path that will be easy to access from DiscJuggler, such as My Documents or the Desktop.

Click on the **Print** folder.

Click on the **Print** button. A Printer Display similar to the one shown in the figure below will be displayed.

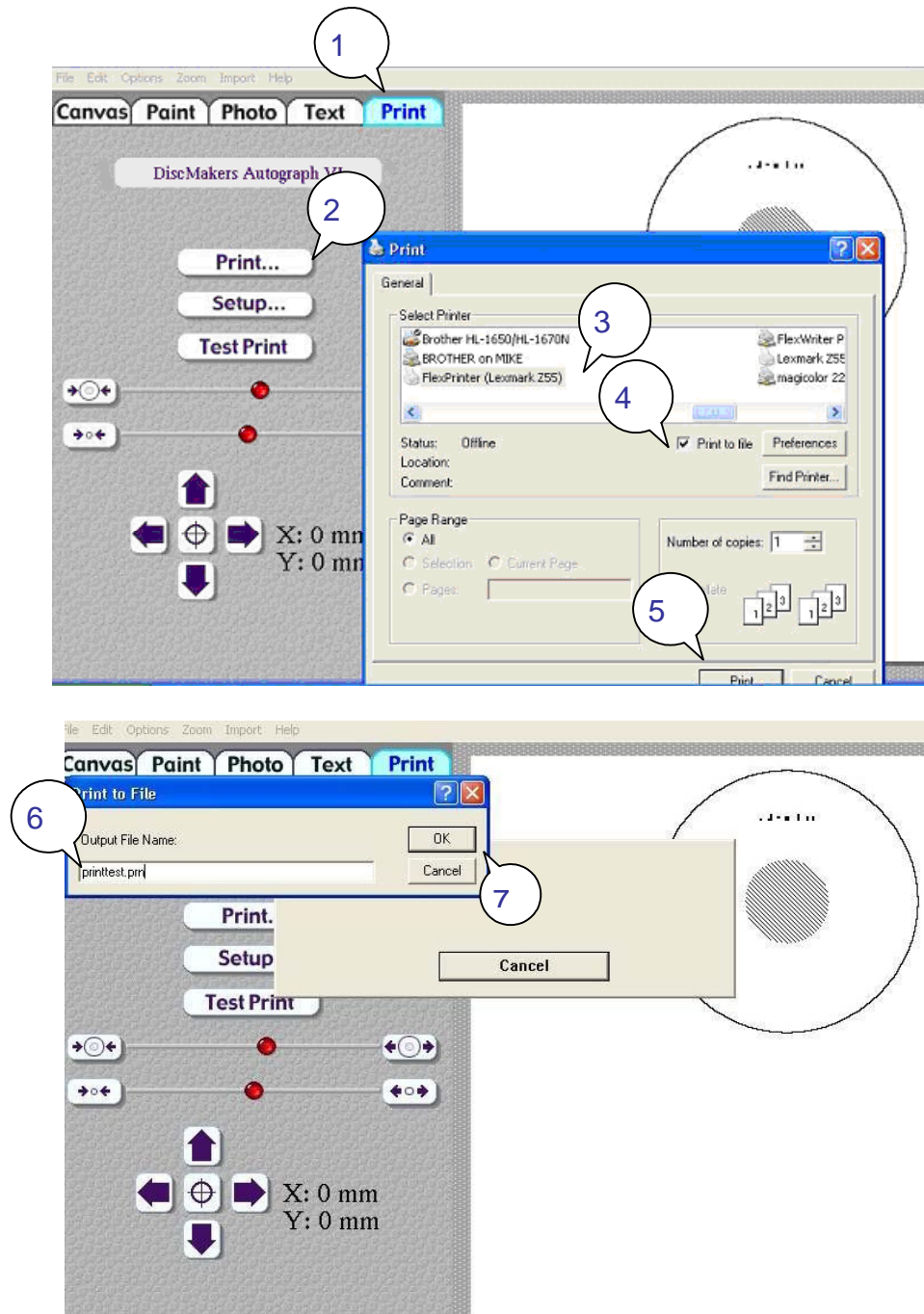
Make sure that the **Autograph VI** is selected under Printer Selection.

Choose **PRINT TO FILE**. In order for Discjuggler to use the label file, it is necessary to create a print file.

Click on **PRINT** button.

Type in the print file name: (i.e. **printtest.prn**) **YOU MUST ADD THE .PRN EXTENSION.**

Click the **OK** button.

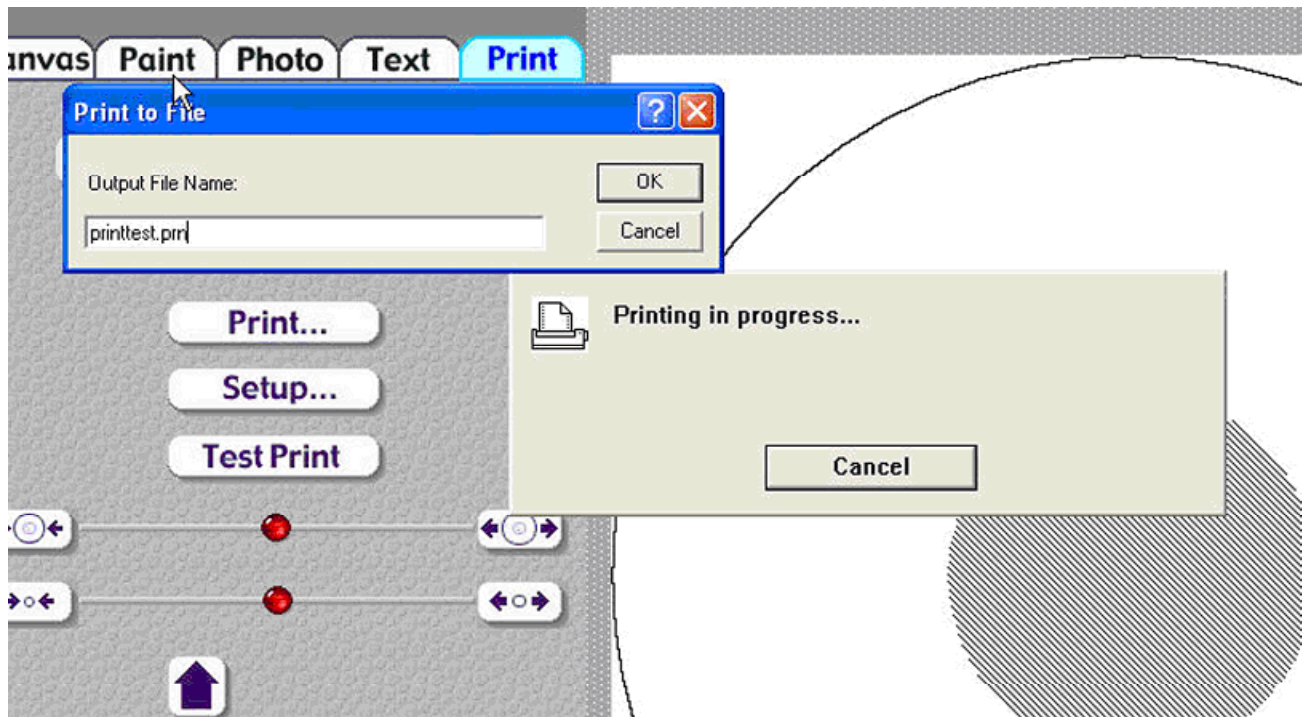


Note that you will have to choose a file name for the PRINT (PRN) file. This can be the same as your label file; however, it is necessary to include the “.prn” at the end of the name. In the example below we have created printtest.prn

Click on OK and the Discus Label Software will create the prn file in the same location that you saved your label file.

You can minimize the labeling software and maximize the DiscJuggler software.

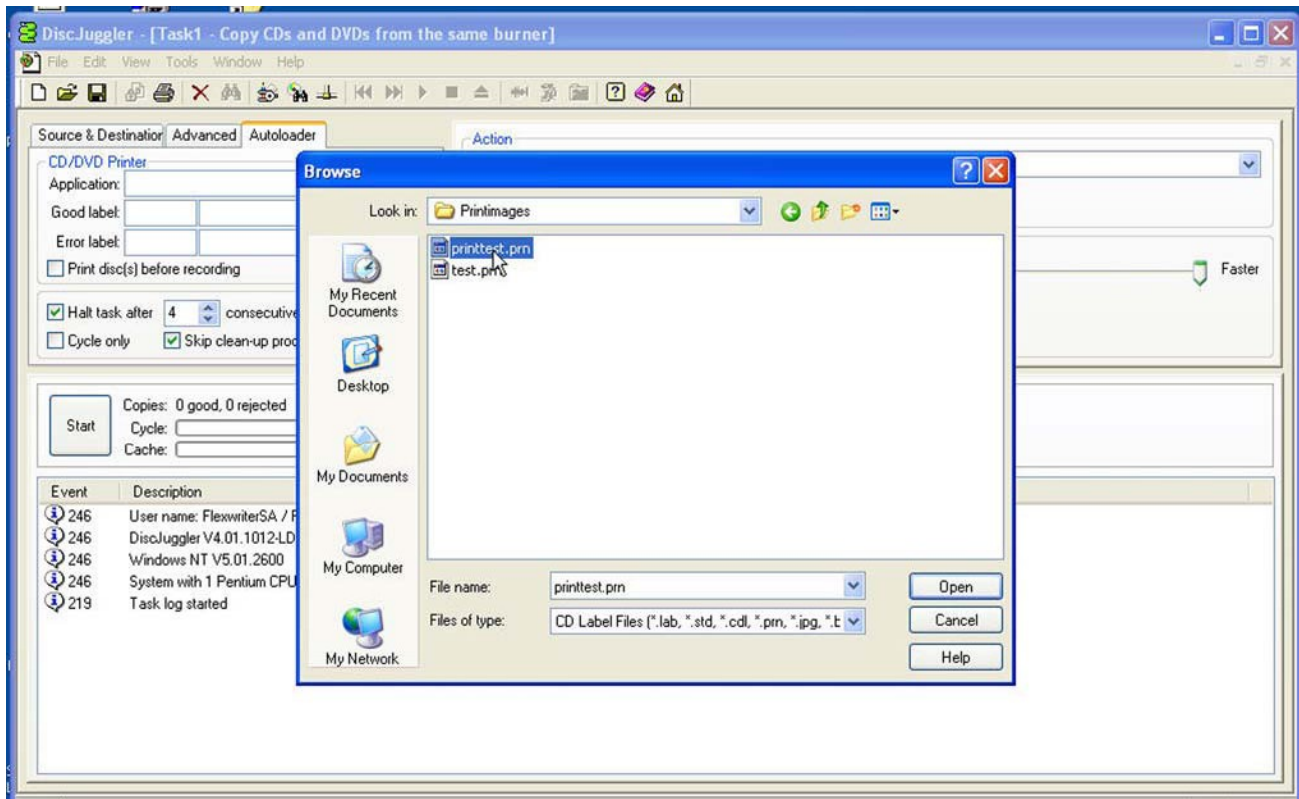
*Note this may be slightly different if you use Windows 2000.*





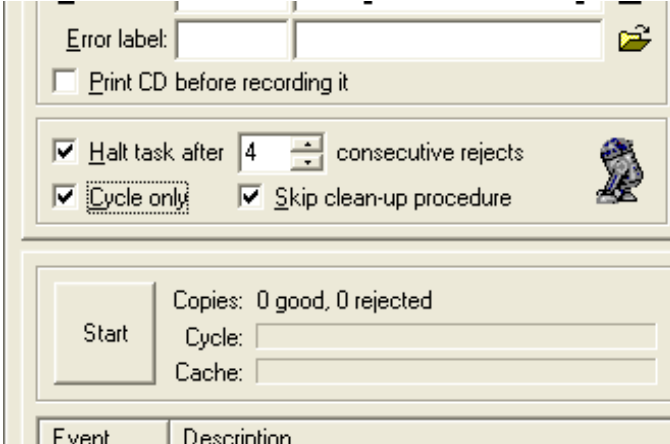
## STEP 17 SET PRINT IMAGE FOR DiscJuggler

Now you have to provide the label print file location to the DiscJuggler. From the DiscJuggler Software choose the **AUTOLOADER** tab on the upper left section. Then click on the folder **ICON** to the right of the **GOOD LABEL** file panel. Then choose **BROWSE** and point to the directory that you stored your print images and choose the **printtest.prn** file or the one that you created. Choose the **OPEN** option and DiscJuggler will place this file and location into the Good Label section.



## Step 18 Cycle Only Option

As an option you can elect to “cycle only” and the software will not “RECORD” onto the media. Instead it will run through all functions BUT RECORD. Check the Cycle Only box to skip recording.

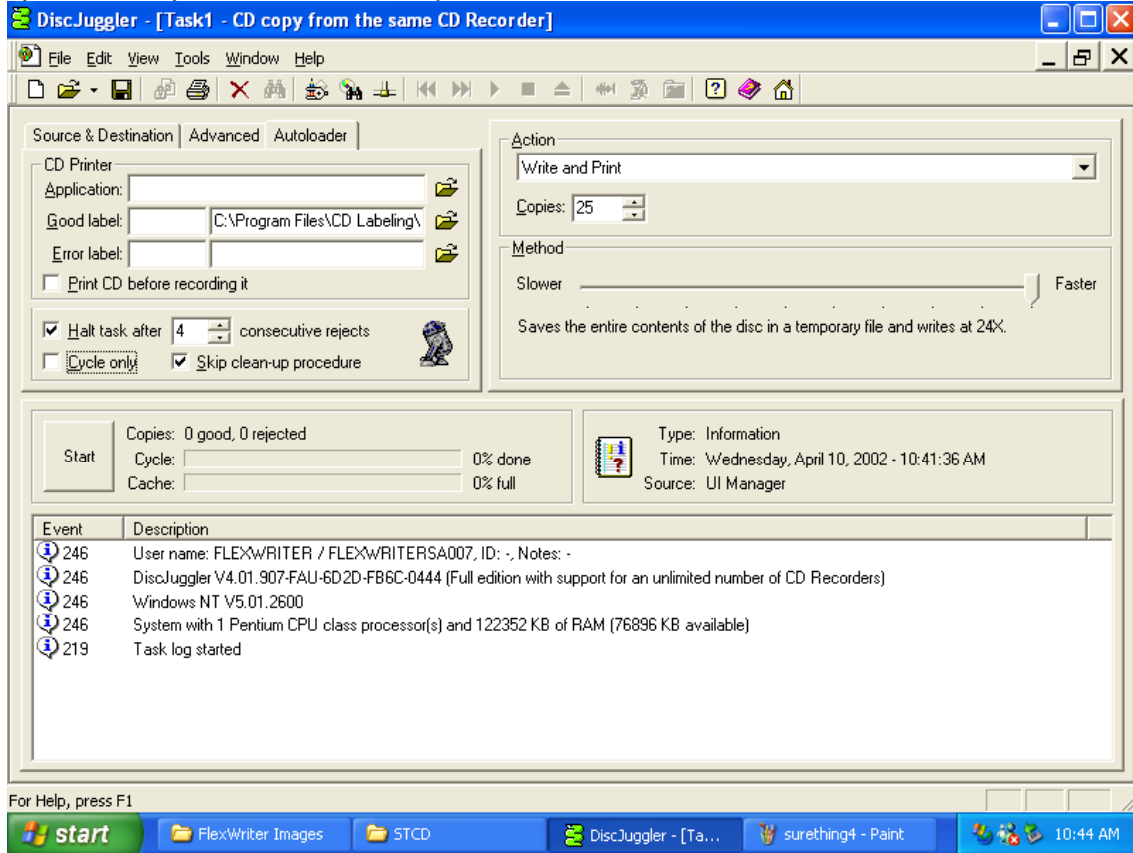


The screenshot shows a software interface with several control elements:

- An "Error label:" field with a folder icon.
- An unchecked checkbox labeled "Print CD before recording it".
- A checked checkbox labeled "Halt task after 4 consecutive rejects" with a spin box set to 4 and a robot icon.
- A checked checkbox labeled "Cycle only" with a dotted border, and another checked checkbox labeled "Skip clean-up procedure" with a robot icon.
- A "Start" button.
- Text indicating "Copies: 0 good, 0 rejected".
- Input fields for "Cycle:" and "Cache:".
- A table header with columns "Event" and "Description".

## Step 19 Start The Job

Now you are ready for the unit to start a job. Click on the **START** button.



The Elite should move to the input spindle, pick up the 1<sup>st</sup> CD (your master) and place it into one of the recorders. The image on the CD will be copied to the hard drive. Then the CD Master will be removed from the Drive and place on the output spindle. Then the Elite will place a blank CD from the input spindle into each of your CD recorders. Next, the image will be recorded onto the media. After that, the Elite will pick up the recorded disk from one of the recorders and carry it to the top of the column and wait for the CD Printer to open. The recorded CD will be placed into the printer tray and the CD will be printed. After printing, the Elite will pick up the CD from the printer and place it on the output spindle. This will repeat for each of your recorders. Once all your recorders are empty, the Elite will take more blank CDs from the input spindle and reload the recorders. This cycle will continue until the 25 copies are completed.

If the unit is trying to use a CD recorder on your PC, or if you get an error message when trying to print, please read the Using Drive Assigner section located on the next page of this guide for some steps to correct the problem.

Please observe the operation and verify that everything works smoothly. If anything does not work, back track and review your steps. If you cannot find the problem please call customer service and one of our technical support staff will gladly assist.

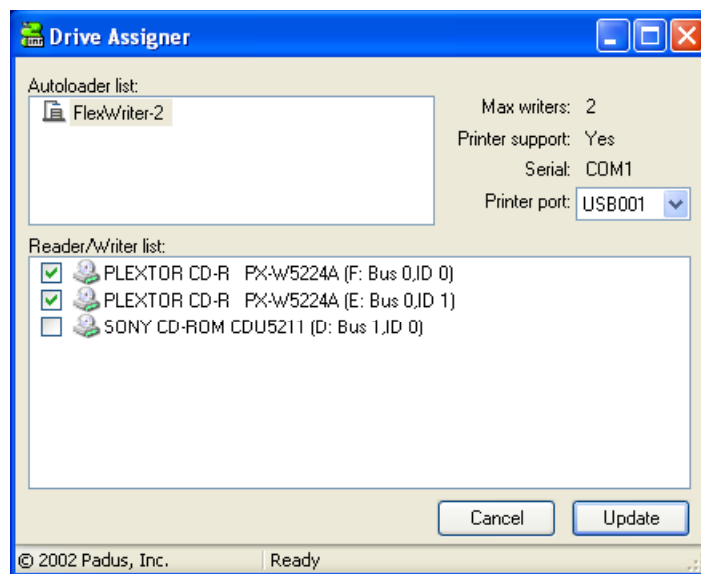
## Using Drive Assigner

If Your Unit is trying to use CD/DVD Recorders on your PC, try the following:  
Due to the fact that DiscJuggler is an open platform that looks at the entire PC system for writers, it can sometimes try to assign your PC's internal writer to the Elite.

Follow this procedure to eliminate this occurrence:

Select Start, All Programs, Padus DiscJuggler, and click on Drive Assigner. DiscJuggler will review the system and display the devices that it has located. Select the writers that are located in the Elite unit by clicking on the boxes beside the drives. Also, select the appropriate printing port for DiscJuggler to use when printing CD labels. Click on Update and then OK when finished with your selection. This process will assign only the recorders of the Elite to DiscJuggler and will set which port the software uses to communicate with your CD printer. The assignment will remain set unless you run the Drive Assigner and change your settings.

If you have a Autograph VI and get an error message and cannot print after a CD is placed in the printer, please read the above paragraph for details on how to select the proper USB printing port for the printer.



## Troubleshooting the Elite

The Elite systems is comprised of 4 basic systems that all work together similar to a PC, Scanner and Printer configuration.

Generally any items that come up can be isolated to one of the following components:

- 1) PC System / Windows® Program / PCI Card
- 2) Loader Unit
- 3) DiscJuggler Copy Software
- 4) CD Printer / Labeling Software

If you have difficulty with any one of the four systems, you can run separate tests on each to verify and correct the problem.

On the PC System, click on the [MY COMPUTER](#) Icon and view the connected components. Verify that the CDR/DVDR drives are accessible. If not, there may be a PCI Card or cable connection problem.

Run the DiscJuggler and view the explorer. Are all the components shown? Loader, Drives etc. if not then you may have to check the PC and hardware connection. The DiscJuggler has online help that can assist in solving most problems within the CDR Software.

If you have any problems that you cannot solve call our service line.